



Good quality products and customer service, continuous improvement in processes, systems and capabilities are the hallmark of leaders in business.

The Electrical Standard Products (ESP) business and New Product Development (NPD) function of L&T Electrical & Automation (E&A) have been awarded the Deming Prize 2019, by JUSE (Union of Japanese Scientists and Engineers), Japan.

The Deming Prize is one of the highest awards on Total Quality Management (TQM) in the globe. It is presented to an organization that has implemented TQM suitable for its management philosophy, scope/type/scale of business and management environment.

The TQM activities of ESP were evaluated for establishment of customer oriented objectives and strategies & top management leadership, suitable utilisation and implementation of TQM, effects obtained regarding business objectives and demonstration of organizational capabilities.

E&A's ESP is the first low voltage switchgear manufacturer in India that has received this recognition.



LTLK Connect App

Connect Anywhere, Anytime...



One App for Smart Controller, Solar Controller and M-POWER PRO

Convenience of technology at your finger tips for remote operation



L&T Electrical & Automation, Electrical Standard Products
L&T Business Park, TC-2, Tower B, 3rd Floor, Gate No. 5, Saki Vihar Road, Powai,
Mumbai - 400 072, INDIA www.lntebg.com

Customer Interaction Center (CIC)
BSNL / MTNL (toll-free): 1800 233 5858 Reliance (toll-free): 1800 200 5858
Tel: 022 6774 5858 Email: cic@lntebg.com Web: www.lntebg.com

DIGITAL SINGLE PHASE CONTROLLER

The power of flexibility and versatility

Basic version

Auto version

FEATURES

Microcontroller Based Solution

Dry Run Protection

UV/OV Protection

Current, Voltage Metering
& Periodic Display

Start & Run Capacitor

Bypass Mode

Off Timer

Digital Display

Capacitor cut-off

Water Tank Status Indication

Automatic Current Setting

All features of Manual Version

Inbuilt Water Level Controller

Water tank status indication

WLC bypass feature

Auto start capacitor switching

Power on delay

Dry run auto reset timer

Auto & Manual mode

RTC based daily ON/OFF timer
Timer count down display
Cyclic timer
Timer Compensation



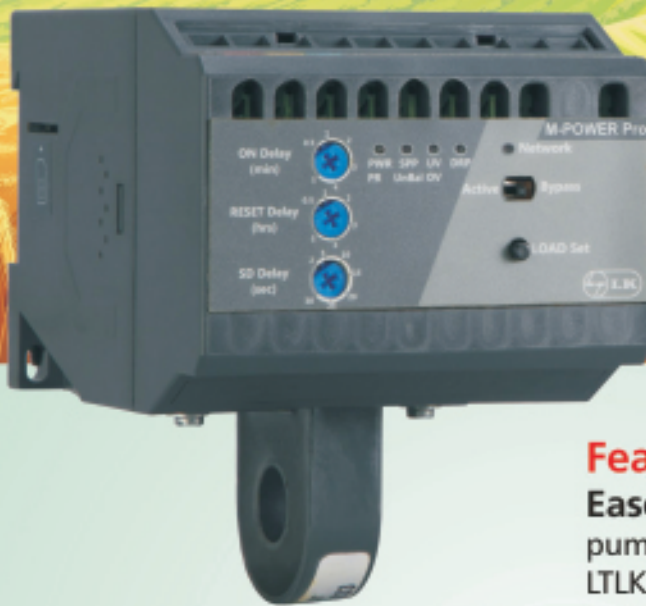
L&T Electrical & Automation, Electrical Standard Products
L&T Business Park, TC-2, Tower B, 3rd Floor, Gate No. 5, Saki Vihar Road, Powai,
Mumbai - 400 072, INDIA www.Lntebg.com

Customer Interaction Center (CIC)
BSNL / MTNL (toll-free): 1800 233 5858 Reliance (toll-free): 1800 200 5858
Tel: 022 6774 5858 Email: cic@Lntebg.com Web: www.Lntebg.com

 **L&T Electrical & Automation**

M-POWER Pro

BENEFITS OF BOTH, COMMUNICATION & PROTECTION



Features :

Ease of operation: Ease and convenience in operating pump from anywhere, anytime through SMS, IVRS and LTLK Connect App.

Selective Protection: One can enable or disable each protection as per convenience. One can also change the voltage and current settings as per requirement.

Ease in monitoring: One can easily check important parameters such as pump status (ON/OFF), metering etc. at the comfort of one's home through LTLK Connect App.

Convenience in usage: The same device can be used with 3 phase DOL & Star - Delta starter, hence no additional device is needed.

Complete protection: Along with dry run fault protection (With dry run reset feature), it provides protection from over voltage, under voltage, single phasing or phase loss, phase reversal and phase unbalance faults.

Easy installation with only 3 wire connections



LTLK
Connect App



Product
videos



Technology at your finger tips

L&T Electrical & Automation, Electrical Standard Products
L&T Business Park, TC-2, Tower B, 3rd Floor, Gate No. 5, Saki Vihar Road, Powai,
Mumbai - 400 072, INDIA www.Lntebg.com

Customer Interaction Center (CIC)
BSNL / MTNL (toll-free): 1800 233 5858 Reliance (toll-free): 1800 200 5858
Tel: 022 6774 5858 Email: cic@Lntebg.com Web: www.Lntebg.com

 L&T Electrical & Automation

INDEX

Starter

Offerings & Compositions	1
MK 1 Starters	4
MK 2 Starters	6
MU/MB Starters	7
ML Starters	9
Single Phase / Three phase starters	11
MU-Automatic DOL Starter	12

Controller

Digital

Digital

Digital

MF-G1 Single Phase Controller	12
Solar Controller	14
SMART Controller	17
MU-G6 / 10 / 15 / 20 Three Phase Controllers	18
MU-G30 / 40 / 50 / 75 Three Phase Controllers	19
MU-G 10W / 20W /30W Three Phase Controllers	20
MR-G <i>i</i> Digital Single Phase Controllers - Manual & Auto	22
MR-G2 / MR-G3 Single Phase Controller	24
MR-G2W Single Phase Controller	26

Accessories & Cable

Digital

Digital

Digital

<i>i</i> -PROTECTOR	28
LTLK MCB with K-curve	29
M-POWER Pro	30
M-POWER +	30
Power Factor Correction Capacitors	31
MDF Capacitors for single phase application	35
Submersible Flat Cable	36



Note:

[Green colour : HSN code]

Current GST 18%, subject to changes as per Govt. notification

[Orange colour : HSN code]

Current GST 5%, subject to changes as per Govt. notification

*Remote Operation

All L&T starters and controllers can be **remotely operated** through M-POWER Pro and M-POWER+





Starters and Controllers Offerings & Composition

Offerings

HP Rating	DOL (Direct On-Line)													
	Starters											Controller		
	MK1	MK2	MF1	MU1	MU1H	MB1	MU2	MB2	MU3	ML1.5	ML2	MU-G6	MU-G10	MU-G10H
0.125			✓											
0.25 - 2	✓		✓											
3 - 6	✓		✓									✓	✓	
7.5	✓	✓	✓	✓	✓	✓				✓	✓		✓	
10				✓	✓	✓				✓	✓		✓	✓
12.5					✓		✓	✓		✓	✓			
15							✓	✓	✓	✓	✓			
17.5									✓		✓			
20											✓			

HP Rating	FASD (Fully Automatic Star-Delta)														
	Starters								Controller						
	MK1	MK2	MU1	MB1	ML1.5	MU2	MB2	ML2	MU-G15	MU-G20	MU-G20H	MU-G30	MU-G40	MU-G50	MU-G75
6 - 10	✓								✓						
12.5	✓		✓	✓	✓			✓	✓						
15	✓	✓	✓	✓	✓			✓	✓	✓					
20					✓	✓	✓	✓		✓	✓	✓			
25					✓	✓	✓					✓			
30						✓	✓	✓				✓	✓	✓	
35								✓					✓	✓	
40													✓	✓	
50														✓	✓
75															✓

HP Rating	SASD (Semi Automatic Star-Delta)							
	Starters							
	MK1	MK2	MU1	MB1	MU2	MB2	ML1.5	ML2
6 - 10	✓							
12.5	✓		✓	✓			✓	✓
15	✓	✓	✓	✓				
20					✓	✓	✓	✓
25					✓	✓	✓	
30					✓	✓		✓
35								✓



Starters and Controllers Offerings & Composition

Composition for DOL (Direct On-Line) Starters

		Relays used															
Starter Type	Relay Range (A)	1-1.6	1.5-2.5	2.5-4	4-6.5	6-10	9-14	9-15	11-18	13-21	13-22	14-23	15-25	20-32	20-33	24-38	28-42
	MK1		MK1	MK1	MK1	MK1	MK1	MK1		MK1		MK1					
MK2											MK2			MK2			
MU1							MU2			MU2			MU2				
MU1H													MU2	MU2			
MU2										MU2				MU2		MU2	
MU3																MU2	MU2
MB1								MN2				MN2					
MB2												MN2			MN2		
ML1.5							ML2/3			ML2/3				ML2/3			
ML2							ML2/3			ML2/3				ML2/3			
		Contactors used															
MK1		MK1	MK1	MK1	MK1	MK1	MK1		MK1		MK1						
MK2											MK2			MK2			
MU1							MU1			MU1			MU1				
MU1H													MU1H	MU1H			
MU2										MU2				MU2		MU2	
MU3																MU3	MU3
MB1								MU1				MU1					
MB2												MU2			MU2		
ML1.5							ML1.5			ML1.5				ML1.5			
ML2							ML2			ML2				ML2			

Composition for SASD (Semi Automatic Star-Delta) Starters

		Relays used									
Starter Type	Relay Range (A)	4-6.5	6-10	9-14	9-15	11-18	13-21	13-22	14-23	20-32	20-33
	MK1		MK1	MK1	MK1		MK1		MK1		
MK2								MK2		MK2	
MU1				MU2			MU2				
MU2							MU2			MU2	
MB1					MN2				MN2		
MB2									MN2		MN2
ML1.5				ML2/3			ML2/3			ML2/3	
ML2				ML2/3			ML2/3			ML2/3	
		Contactors Used									
MK1		MK1	MK1	MK1		MK1		MK1			
MK2								MK2		MK2	
MU1				MU1			MU1				
MU2							MU2			MU2	
MB1					MU1				MU1		
MB2									MU2		MU2
ML1.5				ML1.5			ML1.5			ML1.5	
ML2				ML2			ML2			ML2	



Starters and Controllers Offerings & Composition

Composition for FASD (Fully Automatic Star-Delta) Starters

Relay Range (A) / Starter Type		Relays used									
		4-6.5	6-10	9-14	9-15	11-18	13-21	13-22	14-23	20-32	20-33
MK1		MK1	MK1	MK1		MK1		MK1			
MK2								MK2		MK2	
MU1				MU2			MU2				
MU2							MU2			MU2	
MB1					MN2				MN2		
MB2									MN2		MN2
ML1.5				ML2/3			ML2/3			ML2/3	
ML2				ML2/3			ML2/3			ML2/3	

Relay Range (A) / Starter Type		Contactors used									
		4-6.5	6-10	9-14	9-15	11-18	13-21	13-22	14-23	20-32	20-33
MK1		MK1	MK1	MK1		MK1		MK1			
MK2								MK2		MK2	
MU1				MU1			MU1				
MU2							MU2			MU2	
MB1					MU1				MU1		
MB2									MU2		MU2
ML1.5				ML1.5			ML1.5			ML1.5	
ML2				ML2			ML2			ML2	

Note: Timer used inside MK1 FASD is MK1 Timer with combination coil and in rest all of FASD starters, it is ST100 Timer.

Composition for Controllers

Relay Range (A) / Controller Type		Relays used												
		4-6.5	6-10	9-14	11-18	13-21	13-22	20-32	20-33	28-42	30-50	36-60	45-75	66-110
MU-G6		MK1	MK1	MK1										
MU-G10		MU1	MU1	MU2		MU2								
MU-G10H							MU2		MU2					
MU-G15			MK1	MK1	MK1		MK1							
MU-G20				MU2		MU2								
MU-G20H							MU2		MU2					
MU-G30								MN5		MN5				
MUG40										MN5	MN5			
MU-G50										MN5		MN5		
MU-G75												MN5	MN5	

Relay Range (A) / Controller Type		Contactors used												
		4-6.5	6-10	9-14	11-18	13-21	13-22	20-32	20-33	28-42	30-50	36-60	45-75	66-110
MU-G6		MK1	MK1	MK1										
MU-G10		MU1	MU1	MU1		MU1								
MU-G10H							MU2		MU2					
MU-G15			MK1	MK1	MK1		MK1							
MU-G20				MU1		MU1								
MU-G20H							MU2		MU2					
MU-G30								ML2W		ML2W				
MUG40										ML3W	ML3W			
MU-G50										ML4W		ML4W		
MU-G75												ML6W	ML6W	

Relay Range (A) / Controller Type		Single Phase Preventer used												
		4-6.5	6-10	9-14	11-18	13-21	13-22	20-32	20-33	28-42	30-50	36-60	45-75	66-110
MU-G6		Sz5	Sz5	Sz5										
MU-G10		Sz5	Sz5	Sz5		Sz5								
MU-G10H							Sz5		Sz5					
MU-G15			SDz5	SDz5	SDz5		SDz5							
MU-G20				SDz5		SDz5								
MU-G20H							SDz5		SDz5					
MU-G30								SDz5		SDz5				
MUG40										SDz5	SDz5			
MU-G50										SDz5		SDz5		
MU-G75												SDz5	SDz5	



MK1 Starters



MK1 DOL Starters [HSN Code 8536]



Interior View of MK1 DOL

Suitable for Pump/Motor 3Ø, 415V, 50Hz	Relay Range (A)	Cat. No.			Std. Pkg. (Nos.)	M.R.P. (₹) Per Unit
		Coil Voltage 360V-W (200V - 400V)	Coil Voltage 360V	Coil Voltage 400/440V		
0.25 HP	0.6 - 1			SS96210POKO	1	2165
0.5 HP	1 - 1.6		SS96210COMO	SS96210POMO	1	2165
1 HP	1.5 - 2.5		SS96210COPO	SS96210POPO	1	2165
2 HP	2.5 - 4		SS96210CORO	SS96210PORO	1	2165
4 HP	4 - 6.5	SS96210SOTO	SS96210COTO	SS96210POTO	1	2165
6 HP	6 - 10	SS96210SOVO	SS96210COVO	SS96210POVO	1	2165
7.5 HP	9 - 14	SS96210SOAO	SS96210COAO	SS96210POAO	1	2165
7.5 HP	11 - 18	SS96211SOCO	SS96211COCO	SS96211POCO	1	2221
7.5 HP	13 - 22	SS96228SODO	SS96228CODO	SS96228PODO	1	2277

Note: For Single Phase Starter application, please refer page no. 11

MK1 SASD Starters [HSN Code 8536]



Interior View of MK1 SASD

Suitable for Pump/Motor 3Ø, 415V, 50Hz	Relay Range (A)	Cat. No.		Std. Pkg. (Nos.)	M.R.P. (₹) Per Unit
		Coil Voltage 360V	Coil Voltage 440V		
6 HP	4 - 6.5	SS96255COTO		1	7085
10 HP	6 - 10	SS96255COVO	SS96255POVO	1	7085
12.5 / 15 HP	9 - 14	SS96255COAO	SS96255POAO	1	7085
15 HP	11 - 18	SS96258COCO	SS96258POCO	1	7145
15 HP	13 - 22	SS96260CODO	SS96260PODO	1	7235

MK1 FASD Starters [HSN Code 8536]



Interior View of MK1 FASD

Suitable for Pump/Motor 3Ø, 415V 50Hz	Relay Range (A)	Cat. No.		Std. Pkg. (Nos.)	M.R.P. (₹) Per Unit
		Coil Voltage 360V	Coil Voltage 440V		
6 HP	4 - 6.5	SS96254COTO	SS96254POTO	1	7865
10 HP	6 - 10	SS96254COVO	SS96254POVO	1	7865
12.5 / 15 HP	9 - 14	SS96254COAO	SS96254POAO	1	7865
15 HP	11 - 18	SS96257COCO	SS96257POCO	1	7920
15 HP	13 - 22	SS96259CODO	SS96259PODO	1	7965



Spares for MK1 Starters



MK1 Spares [HSN Code 8538]



MK1 Spares

	Description	Cat. No.	Std. Pkg. (Nos.)	M.R.P. (₹) Per Unit
MK1 Spares	Spare kit with hardware (4 sets of contacts)	CS909830000	50	530
	Single moving contact	SS910090000	10	55
	Push button unit	SS900040000	1	110
	Arc shield	SS500040000	1	115
	Contact bridge without contact	SS500050000	1	110
	Aux. contact block: 1NO + 1NC	SS901200000	50	250
	Thermal timer without combination coil	SS902240000	1	680
	MK1 Cover Screw	XS000120000	1000	10

MK1 Coil [HSN Code 8538]



MK1 Standard Operating Coil

	Description	Cat. No.	Std. Pkg. (Nos.)	M.R.P. (₹) Per Unit
MK1 Standard Operating Coil	220V	SS900440000	10	190
	230 / 250V	SS900450000	10	190
	360V	SS901650000	10	190
	400 / 440V	SS900470000	10	190
Wide Band Coil	360V-W (200V - 400V)	SS909930000	10	215

MK1 Contactors [HSN Code 8536]



MK1 Contactor

	Description	Cat. No.	Std. Pkg. (Nos.)	M.R.P. (₹) Per Unit
MK1 Contactors	220V	SS95200K000	10	1405
	230 / 250V	SS95200N000	10	1405
	360V	SS95200C000	10	1405
	360V-W (200V - 400V)	SS95200S000	10	1405
	400 / 440V	SS95200P000	10	1405

MK1 Combination Coil [HSN Code 8538]



MK1 Combination Coil

	Description	Cat. No.	Std. Pkg. (Nos.)	M.R.P. (₹) Per Unit
MK1 Combination Coil	Combination coils for 400 / 440V	SS904430000	10	400
	Combination coils for 360V	SS904460000	10	400

MK1 Relays [HSN Code 8536]



MK1 Relay

	Description	Cat. No.	Std. Pkg. (Nos.)	M.R.P. (₹) Per Unit
MK1 Relays	0.6 - 1A	SS9003500KO	10	820
	1 - 1.6A	SS9003500MO	10	820
	1.5 - 2.5A	SS9003500PO	10	820
	2.5 - 4A	SS9003500RO	10	820
	4 - 6.5A	SS9003500TO	10	820
	6 - 10A	SS9003500VO	10	820
	9 - 14A	SS9003500AO	10	820
	11 - 18A	SS9003600CO	10	850
	13 - 22A	SS9188800DO	10	930



MK2 Starters



MK2 DOL Starters [HSN Code 8536]



Interior View of MK2 DOL

Suitable for Pump/Motor 3Ø, 415V, 50Hz	Relay Range (A)	Cat. No.			Std. Pkg. (Nos.)	M.R.P. (₹) Per Unit
		Coil Voltage 360V-W (200V - 400V)	Coil Voltage 360V	Coil Voltage 400/440V		
7.5 HP	13 - 22	CS90947SODO	CS90947CODO	CS90947PODO	1	2485
7.5 HP	20 - 32	CS90947SOEO	CS90947COEO	CS90947POEO	1	2485

MK2 SASD Starters [HSN Code 8536]



Interior View of MK2 SASD

Suitable for Pump/Motor 3Ø, 415V, 50Hz	Relay Range (A)	Cat. No.			Std. Pkg. (Nos.)	M.R.P. (₹) Per Unit
		Coil Voltage 360V-W (200V - 400V)	Coil Voltage 360V	Coil Voltage 400/440V		
15 HP	13-22	CS91582SODO	CS91582CODO	CS91582PODO	1	7755
15 HP	20-32	CS91582SOEO	CS91582COEO	CS91582POEO	1	7755

MK2 FASD Starters [HSN Code 8536]



Interior View of MK2 FASD

Suitable for Pump/Motor 3Ø, 415V, 50Hz	Relay Range (A)	Cat. No.		Std. Pkg. (Nos.)	M.R.P. (₹) Per Unit
		Coil Voltage 360V	Coil Voltage 400/440V		
15 HP	13-22	CS91583CODO	CS91583PODO	1	8545
15 HP	20-32	CS91583COEO	CS91583POEO	1	8545

Spares for MK2 Starters [HSN Code 8538]



MK2 Spares

	Description	Cat. No.	Std. Pkg. (Nos.)	M.R.P. (₹) Per Unit
MK2 Spares	Spare kit with hardware (4 sets of contacts)	CS90956O000	50	715
	Single moving contact	CS90951O000	10	70
	Push button unit	SS90004O000	1	110
	Arc shield	CS91013O000	1	120
	Contact bridge without contact	CS91014O000	1	115

MK1 / MK2 Coil [HSN Code 8538]



MK1 / MK2 Standard Operating Coil

	Description	Cat. No.	Std. Pkg. (Nos.)	M.R.P. (₹) Per Unit
MK1 / MK2 Standard Operating Coil	220V	SS90044O000	10	190
	230 / 250V	SS90045O000	10	190
	360V	SS90165O000	10	190
	400 / 440V	SS90047O000	10	190
Wide Band Coil	360V-W (200V - 400V)	SS90993O000	10	215

MK2 Contactors [HSN Code 8536]



MK2 Contactor

	Description	Cat. No.	Std. Pkg. (Nos.)	M.R.P. (₹) Per Unit
MK2 Contactors	360V	CS90945COOO	10	1515
	360V-W (200V - 400V)	CS90945SOOO	10	1515
	400 / 440V	CS90945POOO	10	1515

MK2 Relays [HSN Code 8536]



MK2 Relay

	Description	Cat. No.	Std. Pkg. (Nos.)	M.R.P. (₹) Per Unit
MK2 Relays	13 - 22A	CS90946OODO	10	1035
	20 - 32A	CS90946OOEO	10	1035



MU / MB Starters



MU / MB DOL Starters [HSN Code 8536]

Starter Type	Suitable for Pump/Motor 3Ø, 415V, 50Hz	Relay Range (A)	Cat. No.		Std. Pkg. (Nos.)	M.R.P. (₹) Per Unit
			Coil Voltage 360V	Coil Voltage 415V		
MU1 DOL (with MU relay)	7.5 HP	9 - 14	SS95647COAO	SS95647DOAO	10	3530
	10 HP	13 - 21	SS95647COCO	SS95647DOCO	10	3660
	10 HP	15 - 25	SS95647CODO	SS95647DODO	10	3735
MU1H DOL (with MU relay)	10 HP	15 - 25	CS90622CODO	CS90622DODO	10	3880
	12.5 HP	20 - 32	CS90622COEO	CS90622DOEO	10	4085
MU2 DOL (with MU relay)	12.5 HP	13 - 21	SS95648COCO	SS95648DOCO	10	4530
	15 HP	20 - 32	SS95648COEO	SS95648DOEO	10	4840
	15 HP	24 - 38	SS95648COGO	SS95648DOGO	10	4965
MU3 DOL (with MU relay)	15 HP	24 - 38	CS90613COGO	CS90613DOGO	10	5435
	17.5 HP	28 - 42	CS90613COFO	CS90613DOFO	10	5670
MB1 DOL (with MN relay)	7.5 HP	9 - 15	SS95649COBO	SS95649DOBO	8	4010
	10 HP	14 - 23	SS95649CODO	SS95649DODO	8	4115
MB2 DOL (with MN relay)	12.5 HP	14 - 23	SS95650CODO	SS95650DODO	8	5275
	15 HP	20 - 33	SS95650COEO	SS95650DOEO	8	5515



Interior View of
MU DOL

MU / MB SASD Starters [HSN Code 8536]

Starter Type	Suitable for Pump/Motor 3Ø, 415V, 50Hz	Relay Range (A)	Cat. No.		Std. Pkg. (Nos.)	M.R.P. (₹) Per Unit
			Coil Voltage 360V	Coil Voltage 415V		
MU1 SASD (with MU relay)	12.5 HP	9 - 14	SS95891COAO	SS95891DOAO	1	9325
	15 HP	13 - 21	SS95891COCO	SS95891DOCO	1	9445
MU2 SASD (with MU relay)	20 HP	13 - 21	SS95893COCO	SS95893DOCO	1	11545
	30 HP	20 - 32	SS95893COEO	SS95893DOEO	1	11820
MB1 SASD (with MN relay)	15 HP	14 - 23	SS95895CODO	SS95895DODO	1	11435
MB2 SASD (with MN relay)	20 HP	14 - 23	SS95897CODO	SS95897DODO	1	13225
	30 HP	20 - 33	SS95897COEO	SS95897DOEO	1	13480



Interior View of
MU SASD

MU / MB FASD Starters [HSN Code 8536]

Starter Type	Suitable for Pump/Motor 3Ø, 415V, 50Hz	Relay Range (A)	Cat. No.		Std. Pkg. (Nos.)	M.R.P. (₹) Per Unit
			Coil Voltage 360V	Coil Voltage 415V		
MU1 FASD (with MU relay)	12.5 HP	9 - 14	SS95890COAO	SS95890DOAO	1	10870
	15 HP	13 - 21	SS95890COCO	SS95890DOCO	1	10985
MU2 FASD (with MU relay)	20 HP	13 - 21	SS95892COCO	SS95892DOCO	1	12700
	30 HP	20 - 32	SS95892COEO	SS95892DOEO	1	12975
MB1 FASD (with MN relay)	12.5 HP	9 - 15	SS95894COBO	SS95894DOBO	1	11955
	15 HP	14 - 23	SS95894CODO	SS95894DODO	1	12075
MB2 FASD (with MN relay)	20 HP	14 - 23	SS95896CODO	SS95896DODO	1	14500
	30 HP	20 - 33	SS95896COEO	SS95896DOEO	1	14775



Interior View of
MU FASD

Note:- MN relay is with single phase prevention feature.



Spares for MU / MB Starters



MU1 Contactor



MU1H Contactor



MU2 Contactor



MU3 Contactor



MU1 Relay



MU2 Relay



MU Contact Bridge



MU Spare Kit



MU Coil



MU Spare Housing



Relay Extension Knob

MU Contactor [HSN Code 8536]

Component	AC3 Rating	AC1 Rating	Type	Cat. No.	Std. Pkg. (Nos.)	M.R.P. (₹) Per Unit
MU1 Contactor	16A	55A	MU1 360V	CS94007C000	10	2045
			MU1 415V	CS94007D000	10	2045
MU1H Contactor	20A	55A	MU1H 360V	CS90623C000	10	2190
			MU1H 415V	CS90623D000	10	2190
MU2 Contactor	25A	63A	MU2 360V	CS94008C000	10	2750
			MU2 415V	CS94008D000	10	2750
MU3 Contactor	32A	63A	MU3 360V	CS90609C000	10	3315
			MU3 415V	CS90609D000	10	3315

MU Relay [HSN Code 8536]

Component	Type	Cat. No.	Std. Pkg. (Nos.)	M.R.P. (₹) Per Unit
MU1 Relay	4 - 6.5A	SS96557OOTO	1	1030
	6 - 10A	SS96557OOVO	1	1030
	9 - 14A	SS95979OOAO	1	1175
MU2 Relay	13 - 21A	SS95979OOCO	1	1245
	15 - 25A	SS95979OODO	1	1355
	20 - 32A	SS95979OOEO	1	1520
	24 - 38A	SS95979OOGO	1	1665
	28 - 42A	SS95979OOFO	1	1805

MU Contactor Spares [HSN Code 8538]

Type	Cat. No.	Std. Pkg. (Nos.)	M.R.P. (₹) Per Unit
MU1 contact bridge	CS94994O000	10	115
MU1H contact bridge	CS91099O000	10	115
MU2 contact bridge	CS94994O000	10	115
MU3 contact bridge	CS91096O000	10	115
MU1 single moving contact	CS94995O000	1	120
MU1H single moving contact	CS91102O000	1	160
MU2 single moving contact	CS94996O000	1	230
MU3 single moving contact	CS91103O000	1	290
MU-Add ON Block - 1NO + 1NC (LHS)	SS94072O000	10	190

Spares For MU / MB [HSN Code 8538]

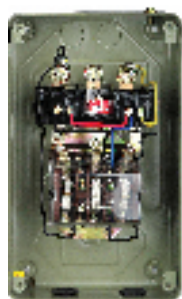
Component	Type	Cat. No.	Std. Pkg. (Nos.)	M.R.P. (₹) Per Unit
Spare Kit	MU1	CS94010O000	1	750
	MU1H	CS90624O000	1	990
	MU2	CS94011O000	1	1335
	MU3	CS90612O000	1	1700
MU Coils	240V	CS94009B000	10	515
	360V	CS94009C000	10	515
	415V	CS94009D000	10	515
Spare Relay Extension Knob (Pack of 20 Nos.)	MU1	CS94336O000	1	90
	MU2	CS94337O000	1	90
Spare Housing	MU1	CS94998O000	10	260
	MU1H	CS91098O000	10	260
	MU2	CS94999O000	10	260
	MU3	CS91060O000	10	260



ML Starters

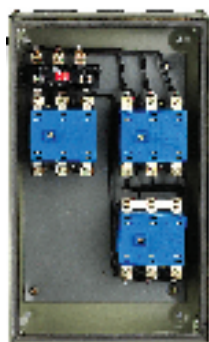


ML DOL Starters [HSN Code 8536]



Interior View of ML DOL

Starter Type	Suitable for Pump/Motor 3Ø, 415V, 50Hz	Relay Range (A)	Cat. No.		Std. Pkg. (Nos.)	M.R.P. (₹) Per Unit
			Coil Voltage 360V	Coil Voltage 440V		
ML1.5 DOL	7.5 HP	9 - 14	SS91854COAO	SS91854POAO	1	6675
	12.5 HP	13 - 21	SS91854COCO	SS91854POCO	1	6675
	15 HP	20 - 32	SS91854COEO	SS91854POEO	1	6675
ML2 DOL (Heavy duty)	7.5 HP	9 - 14		SS90702POAO	1	11120
	10/12.5 HP	13 - 21	SS90702COCO	SS90702POCO	1	11120
	20 HP	20 - 32	SS90702COEO	SS90702POEO	1	11120



Interior View of ML SASD

ML SASD Starters [HSN Code 8536]

Starter Type	Suitable for Pump/Motor 3Ø, 415V, 50Hz	Relay Range (A)	Cat. No.		Std. Pkg. (Nos.)	M.R.P. (₹) Per Unit
			Coil Voltage 360V	Coil Voltage 440V		
ML1.5 SASD	20 HP	13 - 21	SS91856COCO	SS91856POCO	1	15215
	25 HP	20 - 32	SS91856COEO	SS91856POEO	1	15215
ML2 SASD (Heavy duty)	20 HP	13 - 21	SS90707COCO	SS90707POCO	1	26865
	35 HP	20 - 32	SS90707COEO	SS90707POEO	1	26865



Interior View of ML FASD

ML FASD Starters [HSN Code 8536]

Starter Type	Suitable for Pump/Motor 3Ø, 415V, 50Hz	Relay Range (A)	Cat. No.		Std. Pkg. (Nos.)	M.R.P. (₹) Per Unit
			Coil Voltage 360V	Coil Voltage 440V		
ML1.5 FASD	12.5 HP	9 - 14	SS91855COAO	SS91855POAO	1	17275
	20 HP	13 - 21	SS91855COCO	SS91855POCO	1	17275
	25 HP	20 - 32	SS91855COEO	SS91855POEO	1	17275
ML2 FASD (Heavy duty)	12.5 HP	9 - 14		SS90705POAO	1	27955
	20 HP	13 - 21	SS90705COCO	SS90705POCO	1	27955
	35 HP	20 - 32	SS90705COEO	SS90705POEO	1	27955



Spares For ML Starters



ML1.5 Contactor

ML Contactor [HSN Code 8536]

Component	Type	AC3 Rating (A)	AC1 Rating (A)	Aux. Contacts	Cat. No.	Std. Pkg. (Nos.)	M.R.P. (₹) Per Unit
ML Contactor	ML1.5	25	25	2 NO + 2 NC	SS91851C000	1	3320
	ML2W	32	40	2 NO + 2 NC	CS96005L000	1	6260
	ML3W	40	45	2 NO + 2 NC	CS90907L000	1	9240
	ML4W	70	100	2 NO + 2 NC	CS96006L000	1	15110
	ML6W	110	125	2 NO + 2 NC	CS90168L000	1	23845

ML Coil [HSN Code 8538]



Standard Operating Coil ML1.5



Standard Operating Coil ML2 / ML3

Component	Voltage	Cat. No.	Std. Pkg. (Nos.)	M.R.P. (₹) Per Unit
Standard Operating Coils for ML1.5	240V	SS90873B000	10	730
	360V	SS90873C000	10	730
	380V	SS90873L000	10	730
	440V	SS90873P000	10	730
Standard Operating Coils for ML2/ML2W/ML3/ML3W Contactor	240V	SS90545B000	10	1225
	360V	SS90545C000	10	1225
	380V	SS90545L000	10	1225
	440V	SS90545P000	10	1225
Standard Operating Coils for ML4/ML4W Contactor	240V	SS91258B000	10	2340
	360V	SS91258C000	10	2340
	380V	SS91258L000	10	2340
	440V	SS91258P000	10	2340

ML1.5 [HSN Code 8538]



Spare kit

Spare kit without coil	ML1.5	SS95305O000	50	1845
Moving contacts kit	ML1.5	SS92817O000	10	540
Front Housing & Moving Bridge kit	ML1.5	ST28734O000	10	580

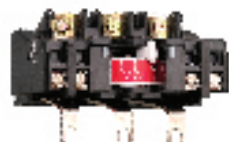
ML2 [HSN Code 8538]

Spare kit without coil	ML2	SS95307O000	10	3005
Moving contacts kit	ML2	SS92818O000	10	810
Front Housing & Moving Bridge kit	ML2	ST23866O000	10	790

ML Relay [HSN Code 8536]



ML1 Relay



ML2 / ML3 Relay

Type of Mounting (Operation)	Relay Range (A)	Cat. No.	Std. Pkg. (Nos.)	M.R.P. (₹) Per Unit
(Directly Operated) Direct Mounting	ML1			
	4 - 6.5	SS91858O0TO	10	2300
	6 - 10	SS91858O0VO	10	2300
(Directly Operated) Direct Mounting	10 - 16	SS91858O0BO	10	2300
	ML2 / ML3			
	9 - 14	SS91859O0AO	2	3395
	13 - 21	SS91859O0CO	2	3395
	20 - 32	SS91859O0EO	2	3395
	28 - 42	SS91859O0FO	2	3395



Single Phase / Three Phase Starters



Interior View of
MU-2P DOL Starter

MU-2P Single Phase Starters [HSN Code 8536]

Suitable for Pump/Motor 1Ø, 230V, 50Hz	Relay Range (A)	Cat. No.	Std. Pkg. (Nos.)	M.R.P. (₹) Per Unit
0.125 HP	1 - 1.6	CS90319KOMO	1	1675
0.25 HP	1.5 - 2.5	CS90319KOPO	1	1675
0.5 HP	2.5 - 4	CS90319KORO	1	1675
0.75 HP	4 - 6.5	CS90319KOTO	1	1675
1 HP	6 - 10	CS90319KOVO	1	1675
2 HP	9 - 14	CS90319KOAD	1	1675
2 HP	11 - 18	CS90319KOCO	1	1725
3 HP	13 - 22	CS90319KODO	1	1780



Interior View of
MF1 DOL - 1Ø Starter

MF1 Single Phase Starters [HSN Code 8536]

Suitable for Pump/Motor 1Ø, 230V, 50Hz	Relay Range (A)	Cat. No.	Std. Pkg. (Nos.)	M.R.P. (₹) Per Unit
0.75 HP	4.5 - 7	SS97227OOTO	1	1155
1.25 HP	6.5 - 11	SS97227OOVO	1	1155
2 HP	10.5 - 17.5	SS97227OOBO	1	1155
3 HP	12 - 20	SS97227OOCO	1	1155



Interior View of
MF1 DOL - 3Ø Starter

MF1 Three Phase Starters [HSN Code 8536]

Suitable for Pump/Motor 3Ø, 415V, 50Hz	Relay Range (A)	Cat. No.	Std. Pkg. (Nos.)	M.R.P. (₹) Per Unit
0.125 HP	0.4 - 0.65	SS972100OHO	1	1505
0.25 HP	0.6 - 1	SS972100OKO	1	1505
0.5 HP	1 - 1.6	SS972100OMO	1	1505
1.25 HP	1.5 - 2.5	SS972100OPO	1	1505
2 HP	2.5 - 4	SS972100ORO	1	1505
4 HP	4 - 6.5	SS972100OTO	1	1505
6 HP	6 - 10	SS972100OVO	1	1505
7.5 HP	9 - 15	SS972100OBO	1	1505
7.5 HP	11 - 18	SS972100OCO	1	1505



MU - Automatic DOL Starters



MU-Automatic DOL Starter [HSN Code 8536]



Interior View of MU-A DOL

Starter Type	Suitable for Pump/Motor 3Ø, 415V, 50Hz	Relay Range (A)	Cat. No.		Std. Pkg. (Nos.)	M.R.P. (₹) Per Unit
			Coil Voltage 360V	Coil Voltage 415V		
MU-1A DOL (with Sz5 SPPR)	7.5 HP	9 - 14	CS90898COAO	CS90898DOAO	1	5005
	10 HP	13 - 21	CS90898COCO	CS90898DOCO	1	5090
	10 HP	15 - 25	CS90898CODO	CS90898DODO	1	5195
MU-1HA DOL (with Sz5 SPPR)	10 HP	15 - 25	CS90899CODO	CS90899DODO	1	5320
	12.5 HP	20 - 32	CS90899COEO	CS90899DOEO	1	5475
MU-2A DOL (with Sz5 SPPR)	12.5 HP	13 - 21	CS90900COCO		1	5930
	15 HP	20 - 32	CS90900COEO	CS90900DOEO	1	6165
	15 HP	24 - 38	CS90900COGO	CS90900DOGO	1	6265
MU-3A DOL (with Sz5 SPPR)	15 HP	24 - 38	CS90901COGO	CS90901DOGO	1	6520
	17.5 HP	28 - 42	CS90901COFO	CS90901DOFO	1	6675



MF-G1 Single Phase Submersible Pump Controllers

MF-G1 Controller [HSN Code 8536]

With MF1 Starter



Starter Type	Maximum Submersible Pump Rating at 1Ø, 230V, 50Hz	Relay Range (A)	Cat. No.	Run Condenser 440V, 50Hz MFD	M.R.P. (₹) Per Unit
MF-G1 with Ammeter and Voltmeter	0.5 HP	6.5 - 11	SS97728OOVE	1 x 36	2995
MF-G1 with Ammeter Only	0.5 HP	6.5 - 11	SS97734OOVV	1 x 25	2750
MF-G1 with Ammeter and Voltmeter	1 HP	6.5 - 11	SS97730OOVE SS97730OOVG	1 x 36 1 x 50	3120
MF-G1 with Ammeter Only	1 HP	6.5 - 11	SS97736OOVE SS97736OOVG	1 x 36 1 x 50	2875
MF-G1 with Ammeter and Voltmeter	1 HP	12 - 20	SS97730 OOCE SS97730OOCG	1 x 36 1 x 50	3120
MF-G1 with Ammeter Only	1 HP	12 - 20	SS97736OOCE SS97736OOCG	1 x 36 1 x 50	2875
MF-G1 with Ammeter and Voltmeter	1.5 HP	6.5 - 11	SS97731OOVG SS97731OOVF	1 x 50 2 x 36	3220
MF-G1 with Ammeter Only	1.5 HP	6.5 - 11	SS97737OOVF	2 x 36	2975
MF-G1 with Ammeter and Voltmeter	1.5 HP	12 - 20	SS97731OOCG SS97731OOCF	1 x 50 2 x 36	3220
MF-G1 with Ammeter Only	1.5 HP	12 - 20	SS97737OOCG SS97737OOCF	1 x 50 2 x 36	2975
MF-G1 with Ammeter and Voltmeter	2 HP	12 - 20	SS97732OOCG SS97732OOCF	1 x 50 2 x 36	3275
MF-G1 with Ammeter Only	2 HP	12 - 20	SS97738OOCG SS97738OOCF SS97738OOCH	1 x 50 2 x 36 2 x 50	3020



LTK MCBs with K-Curve Exclusively for Agricultural Pumps



SALIENT FEATURES

- Range available from 6A to 125A – 3 Pole and 6A to 50A – 2 Pole
- Specially designed MCBs with K-Curve
 - Short circuit tripping band suitable for submersible pumps
 - Offers effective short circuit protection
- Distinct advantages over rewirable fuse
 - No need of replacing “fuse wire” in case of fault
 - Simple to resume supply by switching ON MCB
 - Saving in fuse replacement time and saving in money
 - Longer life
 - Safer in operation
 - Easy to switch ON/OFF during maintenance



SOLAR Controller



Features:

- ◆ With Maximum Power Point Tracking (MPPT) to deliver maximum water during the day
- ◆ Grid compatible: Can be operated on Solar or on Grid power supply
- ◆ Remote ON/OFF, parameter setting, monitoring and trouble shooting through mobile (In-built GSM, GPS and GPRS), LTLK Connect android app
- ◆ Reverse Polarity Compatibility: Error proofed, even you connect solar output with any polarity to the panel
- ◆ Automatic Start / Stop as per Sun-ray intensity
- ◆ With in-built 4P and 3P MCB for Solar and Grid mode
- ◆ Suitable for outdoor installation
- ◆ Factory prewired panel ensures easy installation and less maintenance



LTLK
Connect App



Product
videos

MU-G SOLAR Controller [HSN Code 8504]

Suitable for AC Induction Pump/Motor 3Ø, 400V/415V, 50Hz	Product	Cat. No.	Description	Std. Pkg. (Nos.)	M.R.P. (₹) Per Unit
3 HP	MU-G3 SOLAR	CS91463PT10	MU-G3 SOLAR Controller with RMU	1	43000
		CS91463PO10	MU-G3 SOLAR Controller without RMU	1	38700
5 HP	MU-G5 SOLAR	CS91464PT10	MU-G5 SOLAR Controller with RMU	1	46335
		CS91464PO10	MU-G5 SOLAR Controller without RMU	1	41820
7.5 HP	MU-G7.5 SOLAR	CS91465PT10	MU-G7.5 SOLAR Controller with RMU	1	68800
		CS91465PO10	MU-G7.5 SOLAR Controller without RMU	1	64285
10 HP	MU-G10 SOLAR	CS91466PT10	MU-G10 SOLAR Controller with RMU	1	71705
		CS91466PO10	MU-G10 SOLAR Controller without RMU	1	67190

SOLAR Drive [HSN Code 8504]

Suitable for AC Induction Pump/Motor 3Ø, 400V/415V, 50Hz	Product	Cat. No.	Description	Std. Pkg. (Nos.)	M.R.P. (₹) Per Unit
3 HP	Solar Drive	LTVF-P40007BAA	Px2000 Solar Drive for MU-G3 SOLAR	1	24500
5 HP		LTVF-P40010BAA	Px2000 Solar Drive for MU-G5 SOLAR	1	27500
7.5 HP		LTVF-P40016BAA	Px2000 Solar Drive for MU-G7.5 SOLAR	1	45800
10 HP		LTVF-P40023BAA	Px2000 Solar Drive for MU-G10 SOLAR	1	53000

SOLAR Controller Spares [HSN Code 8538]

Description	Cat. No.	Std. Pkg. (Nos.)	M.R.P. (₹) Per Unit
Remote Monitoring Unit (RMU) Module	CS914670000	1	5630
Solar Controller ON/OFF Push Button	XM815370000	1	450

NEW

SMART CONTROLLER

Makes Farming Easy



- Star Delta SMART Controller: With or without WLC
- All Benefits of SMART Controller
- Suitable for 15 hp to 75 hp application

A Controller for every need of your pump

For more details kindly contact nearest branch

 **L&T Electrical & Automation**

Upcoming Products

Three Phase Star Delta SMART Controller

MU-G15S FASD & MU-G15HS FASD SMART Controller

Type	Suitable for Pump/Motor 3Ø, 415V, 50Hz	Relay Range (A)	Cat. No.		Std. Pkg. (Nos.)
			Coil Voltage 360-W (200V-400V)	Coil Voltage 400/440V	
MU-G15S	15 HP	4 - 22	CS91529C*DO	CS91529P*DO	1
MU-G15HS	15 HP	13 - 32	CS91530C*EO	CS91530P*EO	1

MU-G20S FASD, MU-G20HS FASD & MU-G25S FASD SMART Controller

Type	Suitable for Pump/Motor 3Ø, 415V, 50Hz	Relay Range (A)	Cat. No.		Std. Pkg. (Nos.)
			Coil Voltage 360V	Coil Voltage 415V	
MU-G20S	20 HP	4 - 22	CS91531C*DO	CS91531D*DO	1
MU-G20S	20 Hp	13 - 32	CS91531C*EO	CS91531D*EO	1
MU-G20HS	20 HP	13 - 42	CS91532C*FO	CS91532D*FO	1
MU-G25S	20 HP	24 - 42	CS91533C*FO	CS91533D*FO	1

MU-G30S FASD & MU-G40S FASD SMART Controller

Type	Suitable for Pump/Motor 3Ø, 415V, 50Hz	Relay Range (A)	Cat. No.		Std. Pkg. (Nos.)
			Coil Voltage 380V		
MU-G30S	30 HP	20 - 50	CS91651L*GO		1
MU-G40S	40 Hp	30 - 60	CS91652L*TO		1

MU-G50S FASD & MU-G75S FASD SMART Controller

Type	Suitable for Pump/Motor 3Ø, 415V, 50Hz	Relay Range (A)	Cat. No.		Std. Pkg. (Nos.)
			Coil Voltage 380V		
MU-G50S	50 HP	30 - 75	CS91653L*JO		1
MU-G75S	75 HP	45 - 90	CS91654L*KO		1

* N for North language version with English, Hindi, Marathi, Gujarati & Punjabi languages

* S for South language version with English, Hindi, Kannada, Telugu & Tamil languages

* E for North language version with English, Hindi, Assamese, Odia & Bengali languages

MU3 Three Phase Star Delta Starters

MU SASD Starters [HSN Code 8536]

Starter Type	Suitable for Pump/Motor 3Ø, 415V, 50Hz	Relay Range (A)	Cat. No.		Std. Pkg. (Nos.)
			Coil Voltage 360V	Coil Voltage 415V	
MU3 SASD (With MU Relay)	35 HP	24 - 38	CS91885COGO	CS91885DOGO	1
MU3 SASD (With MU Relay)	35 HP	28 - 42	CS91886COFO	CS91886DOFO	1

MU FASD Starters [HSN Code 8536]

Starter Type	Suitable for Pump/Motor 3Ø, 415V, 50Hz	Relay Range (A)	Cat. No.		Std. Pkg. (Nos.)
			Coil Voltage 360V	Coil Voltage 415V	
MU3 FASD (With MU Relay)	35 HP	24 - 38	CS91887COGO	CS91887DOGO	1
MU3 FASD (With MU Relay)	35 HP	28 - 42	CS91888COFO	CS91888DOFO	1



SMART Controller



Features:

- ◆ In-built anti-theft protection, gives emergency alert to your mobile when someone steals your pump, cable or controller
- ◆ With Dry Run, Locked Rotor and Short Circuit protection (Inbuilt LTLK MCB)
- ◆ Voltage and current based protection for all faults with individual protection Enable/Disable feature
- ◆ Inbuilt hour based and Real Time Clock based timers with time compensation feature
- ◆ With Line Voltage, Phase Current, Power Factor, Power, Energy metering and total run time information for your pump
- ◆ Complete operation (Remote ON/OFF, parameter setting, monitoring and troubleshooting) through SMS or LTLK Connect Mobile App or IVRS
- ◆ Available in Hindi, Gujarati, Marathi, Tamil, Telugu, Kannada, Malayalam, Bengali, Oriya, Punjabi and English languages with different language selection for individual users
- ◆ Microcontroller based technology
- ◆ Easy installation with factory fitted complete wiring and terminal block, need to connect only the supply and motor wires



LTLK
Connect App



Product
videos

MU-G6S SMART Controller [HSN Code 8536]

Suitable Region	IVRS Languages	Type	Suitable for Pump/Motor 3Ø, 415V, 50Hz	Relay Range (A)	Cat. No.		Std. Pkg. (Nos.)	M.R.P. (₹) Per Unit
					Coil Voltage 360V-W (200V-400V)	Coil Voltage 400/440V		
Central	English, Hindi, Kannada, Telugu, Punjabi	MU-G6S	6 HP	4 - 22	CS91206CCDO	CS91206PCDO	1	16150
South	English, Hindi, Kannada, Telugu, Tamil	MU-G6S	6 HP	4 - 22	CS91206CSDO	CS91206PSDO	1	16150
North	English, Hindi, Marathi, Gujarati, Punjabi	MU-G6S	6 HP	4 - 22	CS91206CNDO	CS91206PNDO	1	16150
East	English, Hindi, Odia, Assamese, Bengali	MU-G6S	6 HP	4 - 22	CS91206CEDO	CS91206PEDO	1	16150

MU-G10S & MU-G10HS SMART Controller [HSN Code 8536]

Suitable Region	IVRS Languages	Type	Suitable for Pump/Motor 3Ø, 415V, 50Hz	Relay Range (A)	Cat. No.		Std. Pkg. (Nos.)	M.R.P. (₹) Per Unit
					Coil Voltage 360V	Coil Voltage 415V		
Central	English, Hindi, Kannada, Telugu, Punjabi	MU-G10S	10	4 - 22	CS91205CCDO	CS91205DCDO	1	17095
		MU-G10HS	10	20 - 42	CS91207CCFO	CS91207DCFO	1	18040
South	English, Hindi, Kannada, Telugu, Tamil	MU-G10S	10	4 - 22	CS91205CSDO	CS91205DSDO	1	17095
		MU-G10HS	10	20 - 42	CS91207CSFO	CS91207DSFO	1	18040
North	English, Hindi, Marathi, Gujarati, Punjabi	MU-G10S	10	4 - 22	CS91205CNDO	CS91205DNDO	1	17095
		MU-G10HS	10	20 - 42	CS91207CNFO	CS91207DNFO	1	18040
East	English, Hindi, Odia, Assamese, Bengali	MU-G10S	10	4 - 22	CS91205CEDO	CS91205DEDO	1	17095
		MU-G10HS	10	20 - 42	CS91207CEFO	CS91207DEFO	1	18040

SMART Controller Spares [HSN Code 8538]

Description	Cat. No.	Std.Pkg.(Nos.)	M.R.P.(₹) Per Unit
<i>i</i> -Smart for DOL without WLC	CS914130*OO	1	13475
Spare CT Assembly DOL (And FASD Upto 25 HP)	CS910950000	1	1025
Spare Battery Pack	CS914170000	1	1035

Please write S for South, N for North and E for East language variants in place of * in the *i*-Smart ordering CAT No.



MU-G6 / 10 / 15 / 20 Three Phase Submersible Pump Controllers (with Single Phase Preventer)



MU-G6 DOL (With Wideband Coil) [HSN Code 8536]



Interior View of MU-G6 DOL

Type	Maximum Submersible Pump Rating at 3Ø, 415V, 50Hz	Relay Range (A)	Coil Voltage	Cat. No.	Std. Pkg. (Nos.)	M.R.P. (₹) Per Unit
MU-G6 DOL	3 HP	4 - 6.5	360V-W (200V-400V)	SS97756COTO	1	6560
	5 HP	6 - 10	360V-W (200V-400V)	SS97756COVO	1	6560
	6 HP	9 - 14	360V-W (200V-400V)	SS97756COAO	1	6560

MU-G10 DOL (With Wideband Coil) [HSN Code 8536]



Interior View of MU-G10 DOL

Type	Maximum Submersible Pump Rating at 3Ø, 415V, 50Hz		Relay Range (A)	Cat. No.		Std. Pkg. (Nos.)	M.R.P. (₹) Per Unit
	HP	kW		Coil Voltage 360V	Coil Voltage 415V		
MU-G10 DOL	3	2.2	4 - 6.5	SS95983COTO	SS95983DOTO	1	7515
	5	3.7	6 - 10	SS95983COVO	SS95983DOVO	1	7515
	7.5	5.5	9 - 14	SS95983COAO	SS95983DOAO	1	7625
	10	7.5	13 - 21	SS95983COCO	SS95983DOCOCO	1	7725
MU-G10H DOL (Heavy duty)	10	7.5	20 - 32	SS95974COEO	SS95974DOEO	1	8690
	10	7.5	28 - 42	SS95974COFO	SS95974DOFO	1	8955

MU-G15 FASD (With Wideband Coil) [HSN Code 8536]



Interior View of MU-G15 FASD

Type	Maximum Submersible Pump Rating at 3Ø, 415V, 50Hz		Relay Range (A)	Cat. No.	Std. Pkg. (Nos.)	M.R.P. (₹) Per Unit
	HP	kW		Coil Voltage 360V-W (200V - 400V)		
MU-G15 FASD	10	7.5	6 - 10	CS94091SOVO	1	12415
	15	11	9 - 14	CS94091SOAO	1	12415
	15	11	11 - 18	CS94091SOCO	1	12490
	15	11	13 - 22	CS94091SODO	1	12545

MU-G20 FASD (With Wideband Coil) [HSN Code 8536]



Interior View of MU-G20 FASD

Type	Maximum Submersible Pump Rating at 3Ø, 415V, 50Hz		Relay Range (A)	Cat. No.		Std. Pkg. (Nos.)	M.R.P. (₹) Per Unit
	HP	kW		Coil Voltage 360V	Coil Voltage 415V		
MU-G20 FASD	15	11	9 - 14	SS95984COAO	SS95984DOAO	1	14605
	20	15	13 - 21	SS95984COCO	SS95984DOCOCO	1	14685
MU-G20H FASD (Heavy duty)	20	15	20 - 32	SS95975COEO	SS95975DOEO	1	17590
	20	15	28 - 42	SS95975COFO	SS95975DOFO	1	17965



MU-G30 / 40 / 50 / 75 Three Phase Submersible Pump Controller (with Single Phase Preventer)



With ML Contactor & MN5 Relay



Interior View of MU-G30 FASD

MU-G30 FASD (With Wideband Coil) [HSN Code 8536]

Type	Maximum Submersible Pump Rating at 3Ø, 415V, 50Hz	Relay Range (A)	Coil Voltage	Cat. No.	Std. Pkg. (Nos.)	M.R.P. (₹) Per Unit
MU-G30 FASD	20 HP	20 - 33	380V	CS96008COEO	1	28270
	30 HP	30 - 50	380V	CS96008COGO	1	28940



Interior View of MU-G40 FASD

MU-G40 FASD (With Wideband Coil) [HSN Code 8536]

Type	Maximum Submersible Pump Rating at 3Ø, 415V, 50Hz	Relay Range (A)	Coil Voltage	Cat. No.	Std. Pkg. (Nos.)	M.R.P. (₹) Per Unit
MU-G40 FASD	30 HP	30 - 50	380V	CS90908LOGO	1	34835
	40 HP	36 - 60	380V	CS90908LOTO	1	35355



Interior View of MU-G50 FASD

MU-G50 FASD (With Wideband Coil) [HSN Code 8536]

Type	Maximum Submersible Pump Rating at 3Ø, 415V, 50Hz	Relay Range (A)	Coil Voltage	Cat. No.	Std. Pkg. (Nos.)	M.R.P. (₹) Per Unit
MU-G50 FASD	30 HP	30 - 50	380V	CS96009COGO	1	46405
	50 HP	45 - 75	380V	CS96009COJO	1	47810



Interior View of MU-G75 FASD

MU-G75 FASD (With Wideband Coil) [HSN Code 8536]

Type	Maximum Submersible Pump Rating at 3Ø, 415V, 50Hz	Relay Range (A)	Coil Voltage	Cat. No.	Std. Pkg. (Nos.)	M.R.P. (₹) Per Unit
MU-G75 FASD	50 HP	45 - 75	380V	CS96451LOJO	1	66345
	75 HP	66 - 110	380V	CS96451LOKO	1	66345

Spare MN Relay [HSN Code 8536]

Type of Mounting (Operation)	Relay Range (A)	Cat. No.	Std. Pkg. (Nos.)	M.R.P. (₹) Per Unit
(Directly Operated)	MN 2			
	6 - 10	SS94142OOVO	10	1390
	9 - 15	SS94142OOBO	10	1410
	14 - 23	SS94144OODO	10	1540
Direct Mounting	20 - 33	SS94145OOEO	10	2290
	MN 5			
	20 - 33	SS94136OOEO	10	2790
	30 - 50	SS94136OOGO	10	3275
Direct Mounting	36 - 60	SS94136OOTO	10	3730
	45 - 75	SS94137OOJO	10	4080
	66 - 110	SS94137OOKO	10	4655



MN 2



MN 5



MU-G 10W / 20W / 30W Three Phase Submersible Controller (with WLC & SPPR)



MU-G10W DOL (With Wideband Coil) [HSN Code 8536]



Interior View of
MU-G10W DOL

Type	Maximum Submersible Pump Rating at 3Ø, 415V, 50Hz		Relay Range (A)	Cat. No.		Std. Pkg. (Nos.)	M.R.P. (₹) Per Unit
	HP	kW		Coil Voltage 360V	Coil Voltage 415V		
MU-G10W DOL with in-built WLC	3	2.2	4 - 6.5	CS91037COTO	CS91037DOTO	1	9520
	5	3.7	6 - 10	CS91037COVO	CS91037DOVO	1	9520
	7.5	5.5	9 - 14	CS91037COAO	CS91037DOAO	1	9635
MU-G10W DOL (Heavy duty) with in-built WLC	10	7.5	13 - 21	CS91037COCO	CS91037DOCOCO	1	9720
	10	7.5	20 - 32		CS91037DOEO	1	10750
	10	7.5	28 - 42	CS91037COFO		1	10980

MU-G20W FASD (With Wideband Coil) [HSN Code 8536]



Interior View of
MU-G20W FASD

Type	Maximum Submersible Pump Rating at 3Ø, 415V, 50Hz		Relay Range (A)	Cat. No.		Std. Pkg. (Nos.)	M.R.P. (₹) Per Unit
	HP	KW		Coil Voltage 360V	Coil Voltage 415V		
MU-G20W FASD with in-built WLC	15	11	9 - 14		CS91038DOAO	1	16320
	20	15	13 - 21	CS91038COCO	CS91038DOCOCO	1	16390
MU-G20W FASD (Heavy duty) with in-built WLC	20	15	20 - 32	CS91038COEO	CS91038DOEO	1	19185
	20	15	28 - 42		CS91038DOFO	1	19550

MU-G30W FASD (With Wideband Coil) [HSN Code 8536]



Interior View of
MU-G30W FASD

Type	Maximum Submersible Pump Rating at 3Ø, 415V, 50Hz	Relay Range (A)	Coil Voltage	Cat. No.	Std. Pkg. (Nos.)	M.R.P. (₹) Per Unit
MU-G30W FASD with in-built WLC	30 HP	30 - 50	380V	CS91039COGO	1	29350



Spares for MU-G Submersible Pump Controller



Terminal Block
60A-3 Way



Terminal Block
30A-5 Way



Terminal Block
100A-3 Way



Indicating Lamp
Red & Green



Rocker Switch



Volt-Ammeter



SPPR Type Sz5 (7 Wire & 6 Wire)



SPPR Type SDz5

With Settable Time
ON Delay
30sec - 5min

With Settable Time
ON Delay
30sec - 5min

SPPR Type	Modes of Operation			Timer
	Auto	Manual	Bypass	
Sz5	✓	✓	✓	
SDz5	✓	✓	✓	✓



Timer
ST100

Terminal Block [HSN Code 8538]

Description	Cat. No.	Std. Pkg. (Nos.)	M.R.P. (₹) Per Unit
Terminal Block 30A - 5 way (For MR-G2)	CS960320000	1	180
Terminal Block 60A - 3 way (For MU-G10/20)	CS948060000	1	135
Terminal Block 100A - 3 way (For MU-G30/50)	CS943380000	1	860
Terminal Block 125A - 3 way (For MU-G75)	CS901720000	1	3025

Indicating lamp [HSN Code 8531]

Description	Cat. No.	Std. Pkg. (Nos.)	M.R.P. (₹) Per Unit
Indicating lamp Red 415V	CS94810D000	1	255
Indicating lamp Green 415V	CS94812D000	1	255
Spare Lamp, MR-G Controller	CS961260000	1	55

Rocker switch [HSN Code 8538]

Description	Cat. No.	Std. Pkg. (Nos.)	M.R.P. (₹) Per Unit
Rocker switch (For MU-G6 to MU-G20)	CS902840000	1	65
Rocker switch (For MU-G30 to MU-G75)	CS902720000	1	115
Voltage selector switch	CS943350000	1	365

Volt-Ammeter [HSN Code 9030]

Description	Cat. No.	Std. Pkg. (Nos.)	M.R.P. (₹) Per Unit
Volt-Ammeter 500V 30A	CS94817E0EO	1	945
Volt-Ammeter 500V 60A	CS94817EOTO	1	1020
Volt-Ammeter 500V, 0-75A	CS900550000	1	1020
Volt-Ammeter 500V, 0-100A	CS900560000	1	1020
Volt-Ammeter 500V, 0-125A	CS900570000	1	1020
30A Ammeter Spare for MR-G Controller	CS960260000	1	430
Volt-Ammeter (30A, 300V AC) for MR-G Controller	CS960280000	1	740

SPPR [HSN Code 9032]

Description	Cat. No.	Std. Pkg. (Nos.)	M.R.P. (₹) Per Unit
SPPR type Sz5 (7 Wire), 380V	ST921660000	1	725
SPPR type Sz5 (6 Wire), 360V (For MU-G10/10H)	CS94824C000	1	725
SPPR type Sz5 (6 Wire), 380V (For MU-G6)	CS94824L000	1	725
SPPR type Sz5 (6 Wire), 415V (For MU-G10/10H)	CS94824D000	1	725
SPPR type SDz5, 360V (For MU-G20/20H)	XM818080000	1	1365
SPPR type SDz5, 380V (For MU-G30/40/50/75)	XM818070000	1	1365
SPPR type SDz5, 415V (For MU-G15/20/20H)	XM818090000	1	1365

ON-OFF Plugs [HSN Code 8538]

Description	Cat. No.	Std. Pkg. (Nos.)	M.R.P. (₹) Per Unit
Spare plug MU-G6 (Bulk of 10)	ST155910000	1	75
Spare plug MU-10 (Bulk of 10)	ST155920000	1	80
Spare plug MU-15 (Bulk of 10)	ST155930000	1	90
Spare plug MU-20 (Bulk of 10)	ST155940000	1	90
Spare plug MU-30 (Bulk of 10)	ST155950000	1	95
Spare plug MU-75 (Bulk of 10)	ST155970000	1	100

Electronic Star-Delta Timer [HSN Code 9107]

Description	Cat. No.	Std. Pkg. (Nos.)	M.R.P. (₹) Per Unit
Electronic Star-Delta Timer type ST100 160 - 500V, for 3 - 30 sec	ST803280000	1	1575

Note: ST100 supplied with mounting kit, suitable for ET100 replacement.



MR-Gi Digital Single Phase Controllers - Manual & Auto



Manual version FEATURES Auto version



Manual version	FEATURES	Auto version
Microcontroller Based Solution	<ul style="list-style-type: none"> ○ All features of Manual Version ○ Inbuilt Water Level Controller ○ WLC bypass feature ○ Auto start capacitor switching ○ Power on delay ○ Dry Run auto reset timer ○ Auto & Manual mode ○ RTC based daily ON/OFF timer ○ Timer count down display ○ Cyclic timer ○ Timer Compensation 	
Dry Run Protection		
UV/OV Protection		
Current, Voltage Metering		
Start & Run Capacitor		
Bypass Feature		
Off Timer		
Digital Display		
Capacitor cut-off		
Water Tank Status Indication		
Automatic Current Setting		



MR-Gi (Manual) [HSN Code 8536]

Type	Maximum Submersible Pump Rating at 1Ø, 230V, 50Hz	Cat. No.	Start Capacitor 275V, 50Hz MFD	Run Capacitor 440V, 50Hz MFD	M.R.P. (₹) Per Unit
MR-Gi (Manual)	0.5 Hp	CS91321NAOC	80 / 100	1 x 25	3305
		CS91321NAOE	80 / 100	1 x 36	
	1 Hp	CS91322NBOE	100 / 120	1 x 36	3475
		CS91322NBOG	100 / 120	1 x 50	
		CS91322NCOE	120 / 150	1 x 36	
		CS91322NCOG	120 / 150	1 x 50	
	1.5 Hp	CS91323NCOG	120 / 150	1 x 50	3635
		CS91323NCOF	120 / 150	2 x 36	
		CS91323NCOJ	120 / 150	1 x 72	
		CS91323NDOG	150 / 200	1 x 50	
		CS91323NDOF	150 / 200	2 x 36	
	2 Hp	CS91324NDOF	150 / 200	2 x 36	3795
		CS91324NDOH	150 / 200	2 x 50	
		CS91324NDOJ	150 / 200	1 x 72	
		CS91324NEOF	200 / 250	2 x 36	
		CS91324NEOG	200 / 250	1 x 50	
		CS91324NEOJ	200 / 250	1 x 72	
	3 Hp	CS91325NEOH	200 / 250	2 x 50	3950

MR-GiB (Auto) [HSN Code 8536]

Type	Maximum Submersible Pump Rating at 1Ø, 230V, 50Hz	Cat. No.	Start Capacitor 275V, 50Hz MFD	Run Capacitor 440V, 50Hz MFD	M.R.P. (₹) Per Unit
MR-GiB (Auto)	0.5 Hp	CS91718NAOC	80 / 100	1 x 25	4155
		CS91718NAOE	80 / 100	1 x 36	
	1 Hp	CS91719NBOE	100 / 120	1 x 36	4310
		CS91719NBOG	100 / 120	1 x 50	
		CS91719NCOE	120 / 150	1 x 36	
		CS91719NCOG	120 / 150	1 x 50	



MR-Gi Digital Single Phase Controllers - Manual & Auto



MR-GiB (Auto) [HSN Code 8536]

Type	Maximum Submersible Pump Rating at 1Ø, 230V, 50Hz	Cat. No.	Start Capacitor 275V, 50Hz MFD	Run Capacitor 440V, 50Hz MFD	M.R.P. (₹) Per Unit
MR-GiB (Auto)	1.5 Hp	CS91720NCOG	120 / 150	1 x 50	4470
		CS91720NCOF	120 / 150	2 x 36	
		CS91720NCOJ	120 / 150	1 x 72	
		CS91720NDOG	150 / 200	1 x 50	
		CS91720NDOF	150 / 200	2 x 36	
	2 Hp	CS91721NDOF	150 / 200	2 x 36	4630
		CS91721NDOH	150 / 200	2 x 50	
		CS91721NDOJ	150 / 200	1 x 72	
		CS91721NEOF	200 / 250	2 x 36	
		CS91721NEOG	200 / 250	1 x 50	
	3 Hp	CS91721NEOJ	200 / 250	1 x 72	4785
		CS91722NEOH	200 / 250	2 x 50	

MR-GiA (Auto with WLC) [HSN Code 8536]

Type	Maximum Submersible Pump Rating at 1Ø, 230V, 50Hz	Cat. No.	Start Capacitor 275V, 50Hz MFD	Run Capacitor 440V, 50Hz MFD	M.R.P. (₹) Per Unit
MR-GiA (Auto with WLC)	0.5 Hp	CS91331NAOC	80 / 100	1 x 25	4580
		CS91331NAOE	80 / 100	1 x 36	
	1 Hp	CS91332NBOE	100 / 120	1 x 36	4735
		CS91332NBOG	100 / 120	1 x 50	
		CS91332NCOE	120 / 150	1 x 36	
		CS91332NCOG	120 / 150	1 x 50	
	1.5 Hp	CS91333NCOG	120 / 150	1 x 50	4895
		CS91333NCOF	120 / 150	2 x 36	
		CS91333NCOJ	120 / 150	1 x 72	
		CS91333NDOG	150 / 200	1 x 50	
		CS91333NDOF	150 / 200	2 x 36	
	2 Hp	CS91334NDOF	150 / 200	2 x 36	5045
		CS91334NDOH	150 / 200	2 x 50	
		CS91334NDOJ	150 / 200	1 x 72	
		CS91334NEOF	200 / 250	2 x 36	
		CS91334NEOG	200 / 250	1 x 50	
		CS91334NEOJ	200 / 250	1 x 72	
	3 Hp	CS91335NEOH	200 / 250	2 x 50	5215

Digital Single Phase Controller Spares [HSN Code 8538]

Description	Cat. No.	Std.Pkg. (Nos.)	M.R.P. (₹) Per Unit
Spare start switch (Manual Version)	CS913630000	1	170
Spare stop switch (Manual Version)	CS913640000	1	120
Mounting kit accessory	CS913650000	1	110
Spare 5 way terminal block	CS913660000	1	130
Spare 2 way terminal block	CS913670000	1	95

Digital Single Phase Controller Spares [HSN Code 9032]

Description	Cat. No.	Std.Pkg. (Nos.)	M.R.P. (₹) Per Unit
SPARE WLC MODULE	CS913680000	1	895



MR-G2 / MR-G3 Single Phase Submersible Pump Controller



With
MU-2P Contactor
& MU-2P Relay



MR-G2 / MR-G3 Controller [HSN Code 8536]

Type	Maximum Submersible Pump Rating at 1Ø, 230V, 50Hz	Cat. No.	Relay Range (A)	Start Capacitor 275V, 50Hz MFD	Run Capacitor 440V, 50Hz MFD	With Ammeter & Voltmeter	With Ammeter Only	M.R.P. (₹) Per Unit		
MR-G2	0.5 HP	SS97720BATC	4 - 6.5	80 / 100	1 x 25	Yes	-	3805		
		SS97720BAVC	6 - 10	80 / 100	1 x 25					
		SS97720BAVE	6 - 10	80 / 100	1 x 36					
		SS96988BATC	4 - 6.5	80 / 100	1 x 25	-	Yes			
		SS96988BAVC	6 - 10	80 / 100	1 x 25					
		SS96988BAVE	6 - 10	80 / 100	1 x 36					
	SS97721BBVE	6 - 10	100/120	1 x 36	Yes			-	4145	
	SS97721BBVG	6 - 10	100 / 120	1 x 50						
	SS97721BCVE	6 - 10	120 / 150	1 x 36						
	SS97721BCVG	6 - 10	120 / 150	1 x 50						
	SS97721BBAE	9 - 14	100 / 120	1 x 36						
	SS97721BBAG	9 - 14	100 / 120	1 x 50						
	SS97721BCAE	9 - 14	120 / 150	1 x 36	-	Yes	3945			
	SS97721BCAG	9 - 14	120 / 150	1 x 50						
	SS96560BBVE	6 - 10	100 / 120	1 x 36						
	SS96560BBVG	6 - 10	100 / 120	1 x 50						
	SS96560BCVE	6 - 10	120 / 150	1 x 36						
	SS96560BCVG	6 - 10	120 / 150	1 x 50						
	SS96560BBAE	9 - 14	100 / 120	1 x 36	-	Yes	3945			
	SS96560BBAG	9 - 14	100 / 120	1 x 50						
	SS96560BCAE	9 - 14	120 / 150	1 x 36						
	SS96560BCAG	9 - 14	120 / 150	1 x 50						
	SS97722BCAG	9 - 14	120 / 150	1 x 50				Yes	-	4465
	SS97722BCAF	9 - 14	120 / 150	2 x 36						
	SS97722BCAJ	9 - 14	120 / 150	1 x 72						
	SS97722BDAG	9 - 14	150 / 200	1 x 50						
	SS97722BDAF	9 - 14	150 / 200	2 x 36						
	SS97722BDAJ	9 - 14	150 / 200	1 x 72						
	SS97722BCCG	11 - 18	120 / 150	1 x 50						
	SS97722BCCF	11 - 18	120 / 150	2 x 36						
SS97722BCCJ	11 - 18	120 / 150	1 x 72							
SS97722BDCG	11 - 18	150 / 200	1 x 50							
SS97722BDCF	11 - 18	150 / 200	2 x 36							
SS97722BDCJ	11 - 18	150 / 200	1 x 72							



MR-G2 / MR-G3 Single Phase Submersible Pump Controller



MR-G2 / MR-G3 Controller [HSN Code 8536]

Type	Maximum Submersible Pump Rating at 1Ø, 230V, 50Hz	Cat. No.	Relay Range (A)	Start Capacitor 275V, 50Hz MFD	Run Capacitor 440V, 50Hz MFD	With Ammeter & Voltmeter	With Ammeter Only	M.R.P. (₹) Per Unit
MR-G2	1.5 HP	SS96989BCAG	9 - 14	120 / 150	1 x 50	-	Yes	4300
		SS96989BCAF	9 - 14	120 / 150	2 x 36			
		SS96989BCAJ	9 - 14	120 / 150	1 x 72			
		SS96989BDAG	9 - 14	150 / 200	1 x 50			
		SS96989BDAF	9 - 14	150 / 200	2 x 36			
		SS96989BDAJ	9 - 14	150 / 200	1 x 72			
		SS96989BCCG	11 - 18	120 / 150	1 x 50			
		SS96989BCCF	11 - 18	120 / 150	2 x 36			
		SS96989BCCJ	11 - 18	120 / 150	1 x 72			
		SS96989BDCG	11 - 18	150 / 200	1 x 50			
		SS96989BDCF	11 - 18	150 / 200	2 x 36			
	SS96989BDCJ	11 - 18	150 / 200	1 x 72				
	2 HP	SS97723BDCF	11 - 18	150 / 200	2 x 36	Yes	-	4700
		SS97723BDCJ	11 - 18	150 / 200	1 x 72			
		SS97723BECF	11 - 18	200 / 250	2 x 36			
		SS97723BECJ	11 - 18	200 / 250	1 x 72			
		SS97723BDDF	13 - 22	150 / 200	2 x 36			
		SS97723BDDJ	13 - 22	150 / 200	1 x 72			
		SS97723BEDF	13 - 22	200 / 250	2 x 36			
		SS97723BEDG	13 - 22	200 / 250	1 x 50			
		SS97723BEDJ	13 - 22	200 / 250	1 x 72			
		SS96990BDCF	11 - 18	150 / 200	2 x 36			
		SS96990BDCJ	11 - 18	150 / 200	1 x 72			
		SS96990BECF	11 - 18	200 / 250	2 x 36			
		SS96990BECJ	11 - 18	200 / 250	1 x 72			
		SS96990BDDF	13 - 22	150 / 200	2 x 36			
		SS96990BDDJ	13 - 22	150 / 200	1 x 72			
		SS96990BEDF	13 - 22	200 / 250	2 x 36			
		SS96990BEDG	13 - 22	200 / 250	1 x 50			
		SS96990BEDJ	13 - 22	200 / 250	1 x 72			
	3 HP	SS97724BEDH	13 - 22	200 / 250	2 x 50	Yes	-	5195
		CS96468BEBH	16 - 26	200 / 250	2 x 50	-	Yes	4925
		SS97725BEDH	13 - 22	200 / 250	2 x 50			
CS96461BEBH		16 - 26	200 / 250	2 x 50				
MR-G3	5 HP	CS90490BEEJ	20 - 32	200 / 250	3 x 50	Yes	-	7375



MR-G2W Single Phase Submersible Controller (with WLC)



MR-G2W with in-built WLC (Ammeter & Voltmeter version only): [HSN Code 8536]

Maximum Submersible Pump Rating at 1 ϕ , 230V, 50Hz	Cat. No.	Relay Range (A)	Start Capacitor 275V, 50Hz MFD	Run Capacitor 440V, 50Hz MFD	M.R.P. (₹) Per Unit
0.5HP	CS91040BATC	4 - 6.5	80 / 100	1 x 25	7730
	CS91040BAVE	6 - 10	80 / 100	1 x 36	
1HP	CS91041BBVE	6 - 10	100 / 120	1 x 36	8055
	CS91041BBVG	6 - 10	100 / 120	1 x 50	
	CS91041BCVE	6 - 10	120 / 150	1 x 36	
	CS91041BCVG	6 - 10	120 / 150	1 x 50	
	CS91041BBAE	9 - 14	100 / 120	1 x 36	
	CS91041BBAG	9 - 14	100 / 120	1 x 50	
	CS91041BCAE	9 - 14	120 / 150	1 x 36	
1.5HP	CS91041BCAG	9 - 14	120 / 150	1 x 50	8455
	CS91042BCAG	9 - 14	120 / 150	1 x 50	
	CS91042BDAG	9 - 14	150 / 200	1 x 50	
	CS91042BDAF	9 - 14	150 / 200	2 x 36	
	CS91042BCCF	11 - 18	120 / 150	2 x 36	
	CS91042BDCG	11 - 18	150 / 200	1 x 50	
2HP	CS91042BDCF	11 - 18	150 / 200	2 x 36	8645
	CS91043BECF	11 - 18	200 / 250	2 x 36	
	CS91043BDDF	13 - 22	150 / 200	2 x 36	
	CS91043BEDF	13 - 22	200 / 250	2 x 36	
3HP	CS91043BEDG	13 - 22	200 / 250	1 x 50	8955
	CS91044BEDH	13 - 22	200 / 250	2 x 36	



Interior View of MR-G2W

Water Level Controller [HSN Code 9032]



WLC

Description	Cat. No.	Std. Pkg. (Nos.)	M.R.P. (₹) Per Unit
Water Level Controller (240V)(Double Tank application)	XM810520000	1	1190
Water Level Controller (415V)(Double Tank application)	XM810530000	1	1190
Water Level Controller (240V) (Single Tank application)	XM810550000	1	1130
Water Level Controller (415V) (Single Tank application)	XM810560000	1	1130
WLC probes (set of 3 nos.)	XM810510000	1	385
WLC probes (set of 6 nos.)	XM810760000	1	775



Spares for MR-G Submersible Pump Controller



MR 11W Contactor



MR11W Aux. Contact Block



MU - 2P Contactor



MU - 2P Relay



MU-2P Coil



Ammeter



Spare Lamp

MR-G Spares [HSN Code 8538]

Description	Cat. No.	Std.Pkg. (Nos.)	M.R.P. (₹) Per Unit
Add on Auxiliary Contact Block (Contact Type 1NO)	CS941790000	10	250
MR 11W, Spare Coil, 240V, 50Hz	CS94102B000	10	505
MRG-G2 Plug ON & OFF (Bulk of 10 ON & 10 OFF Plugs)	CS916960000	1	220
SPARE ADD ON BLOCK, MR-G2	CS964360000	1	135

Contactor Type MU - 2P [HSN Code 8536]

Component	AC3 Rating	Type	Cat. No.	Std.Pkg. (Nos.)	M.R.P. (₹) Per Unit
MU - 2P Contactor	16A	MU 16 - 2P (160-220V)	CS90117N000	10	645
	25A	MU 25 - 2P (160-220V)	CS90118N000	10	835
	40A	MU 40 - 2P (160-220V)	CS90119N000	10	1095

Contactor Type - MR 11W [HSN Code 8536]

Component	AC3 Rating	Type	Cat. No.	Std.Pkg. (Nos.)	M.R.P. (₹) Per Unit
MR - 11W Contactor	25A	MR 11 W	CS94176B000	10	910

MU - 2P Relay [HSN Code 8536]

Component	Type	Cat. No.	Std.Pkg. (Nos.)	M.R.P. (₹) Per Unit
MU - 2P Relay	1 - 1.6A	CS90207O0MO	1	510
	1.5 - 2.5A	CS90207O0PO	1	510
	2.5 - 4A	CS90207O0RO	1	510
	4 - 6.5A	CS90207O0TO	1	510
	6 - 10A	CS90207O0VO	1	510
	9 - 14A	CS90207O0AO	1	510
	11 - 18A	CS90207O0CO	1	580
	13 - 22A	CS90207O0DO	1	580
	16 - 26A	CS90207O0BO	1	580
	20 - 32A	CS90207O0EO	1	735

MU - 2P Spares [HSN Code 8538]

Component	Type	Cat. No.	Std.Pkg. (Nos.)	M.R.P. (₹) Per Unit
MU - 2P Spare Contact Kit	MU 16 - 2P	CS902170000	1	220
	MU 25 - 2P	CS902180000	1	285
	MU 40 - 2P	CS902190000	1	420
MU - 2P Spare Coil & Top Add-on	MU-2P Coil (220V)	CS90793N000	1	280
	MU-2P Coil (300V)	CS90793R000	1	280
	MU-2P Top Add-on (1 NO)	CS906950000	1	175

Wiring Harness for MU-G/ MR-G Controllers [HSN Code 8538]

Description	Cat. No.	Std.Pkg. (Nos.)	M.R.P. (₹) Per Unit
Wiring Harness, MU-G6 (Flexible Type)	CS961310000	1	705
Wiring Harness, MU-G10 (Flexible Type)	CS961300000	1	1005
Wiring Harness, MU-G10H (Flexible Type)	CS961340000	1	1305
Wiring Harness, MU-G15 (Flexible Type)	CS905670000	1	1480
Wiring Harness, MU-G20 (SDz5 SPPR) (Flexible Type)	CS961290000	1	2220
Wiring Harness, MU-G20H (SDz5 SPPR) (Flexible Type)	CS961350000	1	2365
Wiring Harness, MU-G30 (Flexible Type)	CS961280000	1	2905
Wiring Harness, MU-G50 (Flexible Type)	CS961270000	1	4135
Wiring Harness, MU-G75 (Flexible Type)	CS901710000	1	5940
Wiring Harness 2.5 sq. mm, MR-G2 (Flexible Type, For upto 11 - 18A Relay)	CS961330000	1	815



i-PROTECTOR



i-AD

i-ADS

i-ADSM

i-VDS

i-VDSM

Features

- ◆ Micro-controller based protection design
- ◆ Digital Ammeter and Voltmeter in select variants
- ◆ Auto/Manual/Bypass Mode available
- ◆ Suitable for all starters - upto 40A
- ◆ Protections available - Voltage Single Phasing, Current Single Phasing, Voltage unbalance fault from supply side, Current unbalance fault from motor side, Phase reversal fault, Under voltage fault, Overvoltage fault
- ◆ Dry-run fault protection (With adjustable current setting and adjustable reset time)

Recommended *i-PROTECTOR* for our starters:

Product	DOL								Star - Delta					
	3-Phase Starter				1- Phase Starters	3- Phase Controller		1- Phase Controller	3-Phase SASD / FASD Starters				3-Phase Controller (FASD)	
	MK1 / MK2	MU1 / MU2 / MU3	MB1 / MB2	ML1.5 / ML2 /3	MU-2P	MU-G6	MU-G10 / MU-G10H	MR-G2 / MR-G3	MK1	MU1 / MU2	MB1 / MB2	ML1.5 / ML2 /3	MU-G15	MU-G20 / MU-G20H
<i>i-AD</i>	✓	✓	✓	✓	✓	✓	✓	✓	✓	✓	✓	✓	✓	✓
<i>i-ADS / i-ADSM</i>	✓	✓	✓	✓		✓*	✓*		✓	✓	✗	✓	✓*	✓*
<i>i-VDS / i-VDSM</i>	✓	✓	✓	✓		✓*	✓*		✓	✓	✗	✓	✓*	✓*

* Note: MU-G Controller is provided with Sz5 /Sdz5. In case of upgradation, use *i-ADS*, *i-ADSM*, *i-VDS*, *i-VDSM* in place of SPFR

✓ Note: *i-Protector* is compatible with the mentioned starter

i-PROTECTOR [HSN Code 8536]

Product Designation	Product Details	240 V	360 V	380 V	415 V	Std. Pkg. (Nos.)	M.R.P. (₹) Per Unit
<i>i-AD</i>	Dry run protection relay (current based)	CS90861B000				1	1130
<i>i-AD</i>	Dry run protection relay (current based)		CS90861C000	CS90861L000	CS90861D000	1	1155
<i>i-ADS</i>	Single phasing preventer & dry run protection relay (current based)		CS90862C000	CS90862L000	CS90862D000	1	1935
<i>i-ADSM</i>	Single phasing preventer & dry run protection relay + VI meter (current based)		CS90863C000	CS90863L000	CS90863D000	1	2455
<i>i-VDS</i>	Single phasing preventer & dry run protection relay (voltage based)		CS90866C000	CS90866L000	CS90866D000	1	1795
<i>i-VDSM</i>	Single phasing preventer & dry run protection relay + VI meter (voltage based)		CS90875C000	CS90875L000	CS90875D000	1	2455

Please see the Note at the bottom of the page

WIRE HARNESSES FOR *i-PROTECTOR* [HSN Code 8544]

Description	Cat. No.	Std.Pkg. (Nos.)	M.R.P. (₹) Per Unit
Wire Harness, <i>i-AD</i> (230V-Single Phase)	CS916330000	1	225
Wire Harness, <i>i-AD</i> (Three Phase)	CS916340000	1	260
Wire Harness, <i>i-ADS</i> , <i>i-ADSM</i> , <i>i-VDS</i> , <i>i-VDSM</i>	CS916350000	1	320

Note : Different voltage variants of *i-PROTECTOR* are as per the coil voltages of our agri contactors and are to be suitably selected.



LTLK MCB with K-Curve

Exclusively for Agricultural Pumps



MCB Selection for Controllers

2 Pole			3 Pole		
Product	Relay Range	MCB Rating (A)	Product	Relay Range	MCB Rating (A)
MR-G2	4-6.5	10	MU-G6	4-6.5	10
	06-10	10		06-10	10
	09-14	16		09-14	16
	10-18	20	MU-G10	4-6.5	10
	13-22	25		06-10	10
16-26	32	09-14		16	
MR-G3	20-32	32	13-21	25	
			20-32	32	
			MU-G10H	28-42	50
			MU-G20	09-14	40
				13-21	50
			MU-G20H	20-32	100
				28-42	125

Features

- ◆ Range available from 6A to 125A - 3 Pole and 6A to 50A - 2 Pole
- ◆ Specially designed MCBs with K-Curve
 - Short circuit tripping band suitable for submersible pumps
 - Offers effective short circuit protection
- ◆ Rated Voltage: 240V & 415V AC
- ◆ Breaking Capacity
 - 10kA as per IEC 60947-2 up to 63A
 - 15kA as per IEC 60947-2 up to 100A-125A
- ◆ Distinct advantages over rewirable fuse
 - No need of replacing "fuse wire" in case of fault
 - Simple to resume supply by switching ON MCB
 - Saving in fuse replacement time and saving in money
 - Longer life
 - Safer in operation
 - Easy to switch ON/OFF during maintenance

MCB CAT NOS. & Ratings [HSN Code 8536]



MCB Pole	Cat. No.	MCB Rating (A)	Module 1Mod=17.5mm	Std. Pkg. (Nos.)*	M.R.P. (₹) Per Unit
2 - Pole	LK20060K	6	2	6	535
	LK20100K	10	2	6	535
	LK20160K	16	2	6	535
	LK20200K	20	2	6	535
	LK20250K	25	2	6	535
	LK20320K	32	2	6	535
	LK20500K	50	2	6	840



MCB Pole	Cat. No.	MCB Rating (A)	Module 1Mod=17.5mm	Std. Pkg. (Nos.)*	M.R.P. (₹) Per Unit
3 - Pole	LK30060K	6	3	4	855
	LK30100K	10	3	4	855
	LK30160K	16	3	4	855
	LK30200K	20	3	4	855
	LK30250K	25	3	4	855
	LK30320K	32	3	4	855
	LK30400K	40	3	4	1315
	LK30500K	50	3	4	1315
	LK30630K	63	3	4	1315
	LK31000K	100	4.5	1	5405
	LK31250K	125	4.5	1	6005

* Includes DIN channel & hardware for individual MCB up to 63A



M-POWER Pro & M-POWER+ Module For Mobile Starters



Features

- ◆ Only 3 wire connection ensures easy installation with DOL and Star Delta starters
- ◆ Enables the operation (Remote ON/OFF, parameter setting, monitoring and troubleshooting) of your pump through SMS, IVRS, Call and LTLK Connect Android app, thus provides the convenience in controlling the pump operation from anywhere at anytime
- ◆ Offers protection from phase loss, voltage imbalance, phase reversal, over voltage, under voltage and dry run fault with individual protection Enable/Disable feature.
- ◆ Same unit works for Three Phase DOL and Star Delta starter
- ◆ Hour based and Network based daily timers (4 Time slot) with time compensation
- ◆ Up to 4 users along with 1 master can be connected for controlling your pump operation
- ◆ Auto/Manual/Bypass mode and total run time information for your pump



LTLK
Connect App



Product
videos

M-POWER Pro [HSN Code 8536]

Suitable Region	IVRS Languages	Product	Cat. No.			Std. Pkg. (Nos.)	M.R.P. (₹) Per Unit
			Coil Voltage 360V	Coil Voltage 380V	Coil Voltage 415V		
North & West	English, Hindi, Marathi, Gujarati, Punjabi	M-POWER Pro	CS91313MOOO	CS91313LOOO	CS91313O0OO	1	5700
South	English, Hindi, Kannada, Telugu, Tamil		CS91313MOSO	CS91313LOSO	CS91313OOSO	1	5700
East	English, Hindi, Odia, Assamese, Bengali		CS91313MOEO	CS91313LOEO	CS91313O0EO	1	5700

Note : Different voltage variants of M-POWER Pro are as per the coil voltages of our agri contactors and are to be suitably selected.



M-POWER+ [HSN Code 8538]

Description	IVRS Languages	Suitable Region	Cat. No.	Std. Pkg. (Nos.)	M.R.P. (₹) Per Unit
M-POWER+ Module for Mobile Starter - 1P/3P 3 Wire	English, Hindi, Marathi, Punjabi, Gujarati	North & West	GSM0301OONO	1	3835
	English, Hindi, Kannada, Telugu, Tamil	South	GSM0301OOSO	1	3835
	English, Hindi, Bengali, Odiya, Assamese	East	GSM0301O0EO	1	3835



Wire Type Antenna



Controller-side Wire Harness
& Module-side Wire Harness

M-POWER Accessories

Description	Cat. No.	Std. Pkg. (Nos.)	M.R.P. (₹) Per Unit
Wire Type Antenna [8538]	GSM0301A0OO	1	400
Controller-side Wire Harness [8544]	GSM0301C0OO	1	140
Module-side Wire Harness [8544]	GSM0301G0OO	1	210



Power Factor Correction Capacitors



Features:

- ◆ Self-healing property ensures longer life of capacitor
- ◆ Leak proof and high viscous resin construction, hence no leakage or spillage
- ◆ Superior quality Metalized Polypropylene (MPP) film, ingress free construction and low losses ensures capacitance value and longer life of capacitor
- ◆ Metal construction allows natural cooling in ambient
- ◆ Suitable to work on high voltage
- ◆ Improved power factor and low losses ensures optimized cable usage, lesser overheating of motor and hence lesser damage and maintenance



Power Capacitors suitable for Agricultural Applications Box Capacitors [HSN Code 8532]

Rating	Voltage	Cat. No.	Std.Pkg. (Nos.)	M.R.P. (₹) Per Unit
1 kVAr	440V	LTBCA301B2	1	175
2 kVAr	440V	LTBCA302B2	1	345
3 kVAr	440V	LTBCA303B2	1	515
4 kVAr	440V	LTBCA304B2	1	690
5 kVAr	440V	LTBCA305B2	1	860
6 kVAr	440V	LTBCA306B2	1	1030
7.5 kVAr	440V	LTBCA307B2	1	1290
8.33 kVAr	440V	LTBCA308B2	1	1430
10 kVAr	440V	LTBCA310B2	1	1720
12.5 kVAr	440V	LTBCA312B2	1	2145
15 kVAr	440V	LTBCA315B2	1	2575
20 kVAr	440V	LTBCA320B2	1	3430
25 kVAr	440V	LTBCA325B2	1	4285
30 kVAr	440V	LTBCA330B2	1	5140

Cylindrical Capacitors [HSN Code 8532]

Rating	Voltage	Cat. No.	Std.Pkg. (Nos.)	M.R.P. (₹) Per Unit
1 kVAr	440V	LTCCA301B2	1	145
2 kVAr	440V	LTCCA302B2	1	285
3 kVAr	440V	LTCCA303B2	1	430
4 kVAr	440V	LTCCA304B2	1	575
5 kVAr	440V	LTCCA305B2	1	715
6 kVAr	440V	LTCCA306B2	1	860
7.5 kVAr	440V	LTCCA307B2	1	1075
8.33 kVAr	440V	LTCCA308B2	1	1190
10 kVAr	440V	LTCCA310B2	1	1430
12.5 kVAr	440V	LTCCA312B2	1	1780
15 kVAr	440V	LTCCA315B2	1	2140
20 kVAr	440V	LTCCA320B2	1	2855
25 kVAr	440V	LTCCA325B2	1	3560
30 kVAr	440V	LTCCA330B2	1	4275

Cylindrical Capacitors with Clamps [HSN Code 8532]

Rating	Voltage	Cat. No.	Std.Pkg. (Nos.)	M.R.P. (₹) Per Unit
1 kVAr	440V	LTCCC301B2	1	165
2 kVAr	440V	LTCCC302B2	1	305
3 kVAr	440V	LTCCC303B2	1	450
4 kVAr	440V	LTCCC304B2	1	595
5 kVAr	440V	LTCCC305B2	1	730
6 kVAr	440V	LTCCC306B2	1	880
7.5 kVAr	440V	LTCCC307B2	1	1095
8.33 kVAr	440V	LTCCC308B2	1	1210
10 kVAr	440V	LTCCC310B2	1	1450
15 kVAr	440V	LTCCC315B2	1	2160
20 kVAr	440V	LTCCC320B2	1	2875
25 kVAr	440V	LTCCA325B2	1	3585
30 kVAr	440V	LTCCA330B2	1	4300



Power Factor Correction Capacitors



Power Capacitors suitable for Agricultural Applications Box Capacitors [HSN Code 8532]

Rating	Voltage	Cat. No.	Std.Pkg. (Nos.)	M.R.P. (₹) Per Unit
1 kVAr	415V	LTBCA301A2	1	175
2 kVAr	415V	LTBCA302A2	1	345
3 kVAr	415V	LTBCA303A2	1	515
4 kVAr	415V	LTBCA304A2	1	690
5 kVAr	415V	LTBCA305A2	1	860
6 kVAr	415V	LTBCA306A2	1	1030
7.5 kVAr	415V	LTBCA307A2	1	1290
8.33 kVAr	415V	LTBCA308A2	1	1430
10 kVAr	415V	LTBCA310A2	1	1720
12.5 kVAr	415V	LTBCA312A2	1	2145
15 kVAr	415V	LTBCA315A2	1	2575
20 kVAr	415V	LTBCA320A2	1	3430
25 kVAr	415V	LTBCA325A2	1	4285
30 kVAr	415V	LTBCA330A2	1	5140

Cylindrical Capacitors [HSN Code 8532]

Rating	Voltage	Cat. No.	Std.Pkg. (Nos.)	M.R.P. (₹) Per Unit
1 kVAr	415V	LTCCA301A2	1	145
2 kVAr	415V	LTCCA302A2	1	285
3 kVAr	415V	LTCCA303A2	1	430
4 kVAr	415V	LTCCA304A2	1	575
5 kVAr	415V	LTCCA305A2	1	715
6 kVAr	415V	LTCCA306A2	1	860
7.5 kVAr	415V	LTCCA307A2	1	1075
8.33 kVAr	415V	LTCCA308A2	1	1190
10 kVAr	415V	LTCCA310A2	1	1430
12.5 kVAr	415V	LTCCA312A2	1	1780
15 kVAr	415V	LTCCA315A2	1	2140
20 kVAr	415V	LTCCA320A2	1	2855
25 kVAr	415V	LTCCA325A2	1	3560
30 kVAr	415V	LTCCA330A2	1	4275



Capacitor Selection

Capacitor Ratings for Power Factor Improvement

Existing Capacitor Rating In kVAr Per kW

Existing Power Factor = COS Ø1,

Desired Power Factor = COS Ø2

COS Ø1	COS Ø2				
	0.80	0.85	0.90	0.95	1
0.40	1.54	1.67	1.81	1.96	2.29
0.42	1.41	1.54	1.81	1.83	2.16
0.44	1.29	1.42	1.56	1.71	2.04
0.46	1.18	1.31	1.45	1.60	1.93
0.48	1.08	1.21	1.34	1.50	1.83
0.50	0.98	1.11	1.25	1.40	1.73
0.52	0.89	1.02	1.16	1.31	1.64
0.54	0.81	0.94	1.07	1.23	1.56
0.56	0.73	0.86	1.00	1.15	1.48
0.58	0.65	0.78	0.92	1.08	1.40
0.60	0.58	0.71	0.85	1.00	1.33
0.62	0.52	0.65	0.78	0.94	1.27
0.64	0.45	0.58	0.72	0.87	1.20
0.66	0.39	0.52	0.65	0.81	1.14
0.68	0.33	0.46	0.59	0.75	1.08
0.70	0.27	0.40	0.54	0.69	1.02
0.72	0.27	0.34	0.48	0.64	0.96
0.74	0.21	0.29	0.42	0.58	0.91
0.76	0.16	0.24	0.37	0.53	0.86
0.78	0.11	0.18	0.32	0.47	0.80
0.80	0.05	0.13	0.27	0.42	0.75
0.82	-	0.08	0.21	0.37	0.70
0.84	-	0.03	0.16	0.32	0.65
0.86	-	-	0.11	0.26	0.59
0.88	-	-	0.06	0.21	0.54
0.90	-	-	-	0.16	0.48
0.92	-	-	-	0.10	0.43

Example :

Existing Power Factor COSØ10.70
 Desired Power Factor COSØ20.95
 Capacitor Rating As Per Table 0.69 kVAr / kW
 Active Load (For Example, Meter Reading) 100 kW
 Required Capacitor Rating0.69 X 100 = 69 kVAr



Capacitor Selection

- These are only broad guidelines
- For actual values please contact Motor manufacturer
- Recommended capacitor ratings for direct connection to induction motors

for direct connection to induction motors to improve power factor to 0.95 or better at all loads kVAR ratings when speed is:

Motor		3000 rpm	1500 rpm	1000 rpm	750 rpm	500 rpm
HP	kW	Capacitor (KVAR)	Capacitor (KVAR)	Capacitor (KVAR)	Capacitor (KVAR)	Capacitor (KVAR)
2.5	1.9	1	1	1.5	2	2.5
5	3.7	2	2	2.5	3.5	4
7.5	5.6	2.5	3	3.5	4.5	5.5
10	7.5	3	4	4.5	5.5	6.5
15	11.2	4	5	6	7.5	9
20	14.9	5	6	7	9	12
25	18.7	6	7	9	10.5	14.5
30	22.4	7	8	10	12	17
40	29.8	9	10	13	15	21
50	37.3	11	12.5	16	18	25
60	44.8	13	14.5	18	20	28
70	52.2	15	16.4	20	22	31
80	59.7	17	19	22	24	34
90	67.1	19	21	24	26	37
100	74.6	21	23	26	28	40
110	82.1	23	25	28	30	43
120	89.5	25	27	30	32	46
130	97.0	27	29	32	34	49
140	104.4	29	31	34	36	52
145	108.2	30	32	35	37	54
150	111.9	31	33	36	38	55
155	115.6	32	34	37	39	56
160	119.4	33	35	38	40	57
165	123.1	34	36	39	41	59
170	126.8	35	37	40	42	60
175	130.6	36	38	41	43	61
180	134.3	37	39	42	44	62
185	138.0	38	40	43	45	63
190	141.7	38	40	43	45	65
200	149.2	40	42	45	47	67
250	186.5	45	50	55	60	70



MFD Capacitors for Single Phase Application



Run MR-G

Start MR-G

Start Spare

Run Spare

Features:

- ◆ Self-healing property of metalized film ensures longer life of capacitor Oil free dry resin construction, hence no leakage or spillage and no damage to panel
- ◆ Superior quality Metalized Polypropylene (MPP) film, ingress free construction and low losses ensures capacitance value and longer life of capacitor
- ◆ Suitable to work on high voltage
- ◆ High insulation resistance ensures minimum leakage loss
- ◆ Low losses and rated capacitance value ensures trouble free operation and performance of your motor

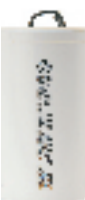
Spare Cylindrical Condensers with Wire [HSN Code 8532]

Type	Rating	Voltage	Cat. No.	Std.Pkg. (Nos.)	M.R.P. (₹) Per Unit
Run	10 μ F	440V	LTCCMRW010B2	21	60
	12.5 μ F	440V	LTCCMRW125B2	21	70
	15 μ F	440V	LTCCMRW015B2	21	90
	20 μ F	440V	LTCCMRW020B2	21	105
	25 μ F	440V	LTCCMRW025B2	12	110
	30 μ F	440V	LTCCMRW030B2	12	120
	36 μ F	440V	LTCCMRW036B2	12	125
	40 μ F	440V	LTCCMRW040B2	12	160
	45 μ F	440V	LTCCMRW045B2	12	180
	50 μ F	440V	LTCCMRW050B2	12	185
Start	72 μ F	440V	LTCCMRW072B2	12	240
	100 μ F	275V	LTCCMSW100P2	12	180
	120 μ F	275V	LTCCMSW120P2	12	210
	150 μ F	275V	LTCCMSW150P2	12	245
	200 μ F	275V	LTCCMSW200P2	12	280
	250 μ F	275V	LTCCMSW250P2	12	315



Spare Cylindrical Condensers for MR-G Controllers [HSN Code 8532]

Type	Rating	Voltage	Cat. No.	Std.Pkg. (Nos.)	M.R.P. (₹) Per Unit
Run	25 μ F	440V	LTCCMR025B2	12	130
	36 μ F	440V	LTCCMR036B2	12	145
	50 μ F	440V	LTCCMR050B2	12	230
Start	100 μ F	275V	LTCCMS100P2	12	210
	120 μ F	275V	LTCCMS120P2	12	250
	150 μ F	275V	LTCCMS150P2	12	290
	200 μ F	275V	LTCCMS200P2	12	330
	250 μ F	275V	LTCCMS250P2	12	370





Submersible Flat Cable



Submersible Cables

Features :

- ◆ 1100V Grade cable with 99.97% pure ETP grade copper
- ◆ With uniform double insulation, no shock hazards, hence safe to use
- ◆ Lesser cable resistance, hence negligible voltage drop in cable ensures appropriate voltage at motor terminals.

Submersible Cables (Flat Cables) as per IS694:1990 (Extra Thick Insulation) [HSN Code 8544]

Nominal Cross Section Area of Conductor (Sq. mm)	Construction Details/ Max Dia (mm)	Current Carrying Capacity at 40°C (A)	Cat. No.	M.R.P. (₹) Per Meter
1.5	22 / 0.3	14	WST0015PECM*	Please refer Submersible Flat Cables Price List
2.5	36 / 0.3	18	WST0025PECM*	
4	56 / 0.3	26	WST0040PECM*	
6	84 / 0.3	31	WST0060PECM*	
8	120 / 0.29	36	WST0080PECM*	

Note: * 5 for 500 mts & 1 for 1000 mts

Submersible Cables (Flat Cables) as per IS694:1990 (Standard Insulation) [HSN Code 8544]

Nominal Cross Section Area of Conductor (Sq. mm)	Construction Details/ Max Dia (mm)	Current Carrying Capacity at 40°C (A)	Cat. No.	M.R.P. (₹) Per Meter
1	14 / 0.3	11	WS00010PECM*	Please refer Submersible Flat Cables Price List
1.5	22 / 0.3	14	WS00015PECM*	
2.5	36 / 0.3	18	WS00025PECM*	
4	56 / 0.3	26	WS00040PECM*	
6	84 / 0.3	31	WS00060PECM*	
8	120 / 0.29	36	WS00080PECM*	
10	80 / 0.4	42	WS00100PECM*	
16	126 / 0.4	57	WS00160PECM*	

Note: * 5 for 500 mts & 1 for 1000 mts

XLPE Submersible cables

Features :

- ◆ Cross-linked material offers higher withstand capability to temperature and voltage fluctuations
- ◆ Higher current rating optimizes cable size requirement
- ◆ Higher overload capacity and higher short circuit rating ensures better performance
- ◆ Due to better abrasion, corrosion and moisture resistance, longer cable life

Submersible Cables (Flat Cables) as per IS694:1990 (Extra Thick XLPE) [HSN Code 8544]

Nominal Cross Section Area of Conductor (Sq. mm)	Construction Details/ Max Dia (mm)	Current Carrying Capacity at 40°C (A)	Cat. No.	M.R.P. (₹) Per Meter
1.5	22 / 0.3	22	WST0015XECEM*	Please refer Submersible Flat Cables Price List
2.5	36 / 0.3	29	WST0025XECEM*	
4	56 / 0.3	38	WST0040XECEM*	
6	84 / 0.3	47	WST0060XECEM*	

Note: * 5 for 500 mts & 1 for 1000 mts

Submersible Cables (Flat Cables) as per IS694:1990 (Standard XLPE) [HSN Code 8544]

Nominal Cross Section Area of Conductor (Sq. mm)	Construction Details/ Max Dia (mm)	Current Carrying Capacity at 40°C (A)	Cat. No.	M.R.P. (₹) Per Meter
1.5	22 / 0.3	22	WS00015XECEM*	Please refer Submersible Flat Cables Price List
2.5	36 / 0.3	29	WS00025XECEM*	
4	56 / 0.3	38	WS00040XECEM*	
6	84 / 0.3	47	WS00060XECEM*	

Note: * 5 for 500 mts & 1 for 1000 mts

General Terms

All prices are on maximum retail price basis inclusive of all Duties, GST and any other Tax as applicable

Prices are subject to revision without notice.

Warranty Policy

All the products listed in the price list carry a warranty, against manufacturing defects for a period of 18* months from the date of purchase.

Should the product prove to be defective due to faulty workmanship or otherwise, we will remedy the defect or replace the faulty parts or the whole product at our discretion, as soon as possible, free of cost.

The warranty is however subject to the provision of proper usage, efficient maintenance and does not cover defects arising out of fire, accident, inefficient maintenance, faulty operation and accidental damage. It does not cover damage to power electronic components like thyristors & IGBTs, which fail predominantly due to over-temperature & over-voltage. The user needs to take adequate precautions to eliminate these conditions. The manufacturer shall not be liable for any consequential loss, injury or damages attributable to defect or failure of its products.

Comprehensive Service Support

L&T Electrical & Automation has over five decades of experience in providing after sales service for low voltage distribution systems in every type of industry & commercial complex in India.

E&A offers the following services, partnering you in your maintenance of low voltage distribution products:

- Regular Maintenance
- Preventive Maintenance Programme
- On Call
- Annual Maintenance Contract
- Product Support for Managing Obsolescence-Retrofitting & Upgradation of your switchgear products

* Proof of purchase to be retained to avail warranty

Electrical Standard Products (ESP) Offices:

HEAD OFFICE

L&T Electrical & Automation
L&T Business Park, TC 2, Tower 'B'
3rd Floor, Gate No 5
Saki Vihar Road, Powai
Mumbai 400 072
Tel: 022-67052874 / 2737 / 1156
e-mail: cic@LNTEBG.com

BRANCH OFFICES

L&T Electrical & Automation
501, Sakar Complex I
Opp. Gandhigram Rly. Station
Ashram Road
Ahmedabad 380 009
Tel: 079 4900 4000/4001
e-mail: esp-ahm@LNTEBG.com

L&T Electrical & Automation
No 38, Cubbon Road
Bengaluru 560 001
Tel: 080-46136103 / 100
e-mail: esp-blr@LNTEBG.com

L&T Electrical & Automation
131/1, Zone II, Maharana Pratap Nagar
Bhopal 462 011
e-mail: esp-bho@LNTEBG.com

L&T Electrical & Automation
Plot No. 559, Annapurna Complex
Lewis Road
Bhubaneswar 751 014
Tel: 0674-2436690 / 2436696
e-mail: esp-bsr@LNTEBG.com

L&T Electrical & Automation
Aspire Towers, 4th Floor
Plot No. 55, Phase-I
Industrial & Business Park
Chandigarh 160 002
Tel: 0172-4646840 / 41 / 42 / 46 / 53
e-mail: esp-chd@LNTEBG.com

L&T Electrical & Automation
L&T Construction Campus
TC-1 Building, II Floor
Mount-Poonamallee Road
Manapakkam
Chennai 600 089
Tel: 044-2270 6800
e-mail: esp-maa1@LNTEBG.com

L&T Electrical & Automation
67, Appuswamy Road, Post Bag 7156
Opp. Nirmala College
Coimbatore 641 045
Tel: 0422-4588120 / 1 / 5
e-mail: esp-cbe@LNTEBG.com

L&T Electrical & Automation
3rd Floor, 1&2 Vijay Park,
Main Chakrata road
Ballapur Chowk
Dehradun 248001
Tel: +91 9582252411

L&T Electrical & Automation
Khairasol, Degaul Avenue
Durgapur 713 212
Tel: 0343-2540448 / 2540449 / 2540443
e-mail: esp-dgp@LNTEBG.com

L&T Electrical & Automation
5, Milanpur Road, Bamuni Maidan
Guwahati 781 021
Tel: +91 8876554417
e-mail: esp-ghy@LNTEBG.com

L&T Electrical & Automation
2nd Floor, Vasantha Chambers
5-10-173, Fateh Maidan Road
Hyderabad 500 004
Tel: 040-67015052
e-mail: esp-hyd@LNTEBG.com

L&T Electrical & Automation
Monarch Building, 1st Floor
D-236 & 237, Amrapali Marg
Vaishali Nagar
Jaipur 302 021
Tel: 0141-4385914 to 18
e-mail: esp-jai@LNTEBG.com

L&T Electrical & Automation
Akashdeep Plaza, 2nd Floor
P. O. Golmuri
Jamshedpur 831 003
Jharkhand
Tel: 0657-2340502 / 08
e-mail: esp-jam@LNTEBG.com

L&T Electrical & Automation
Skybright Bldg; M. G. Road
Ravipuram Junction, Ernakulam
Kochi 682 016
Tel: 0484-4409420 / 4 / 5 / 7
e-mail: esp-cok@LNTEBG.com

L&T Electrical & Automation
3-B, Shakespeare Sarani
Kolkata 700 071
Tel: 033-48006001
e-mail: esp-ccu@LNTEBG.com

L&T Electrical & Automation
No. 10, Fortuna Tower, 2nd Floor
Rana Pratap Marg, Near NBRI
Lucknow 226001
e-mail: esp-lko@LNTEBG.com

L&T Electrical & Automation
No: 73, Karpaga Nagar, 8th Street
K. Pudur
Madurai 625007
Tel: 0452-2567405 / 2561068 / 2561657
e-mail: esp-mdu@LNTEBG.com

L&T Electrical & Automation
L&T Business Park, TC 2, Tower 'B'
3rd Floor, Gate No 5
Saki Vihar Road, Powai
Mumbai 400 072
Tel: 022-67052874 / 2737 / 1156
e-mail: esp-bom@LNTEBG.com

L&T Electrical & Automation
Unnati Building, 2nd Floor
Automation Campus
A-600, TTC Industrial area
Shil-Mahape road, Mahape
Navi Mumbai 400710
Tel: +91 22 67226502 / 67226300

L&T Electrical & Automation
12, Shivaji Nagar
North Ambajhari Road
Nagpur 440 010
Tel: 0712-2260012 / 6606421
e-mail: esp-nag@LNTEBG.com

L&T Electrical & Automation
32, Shivaji Marg,
Near Moti Nagar,
P. O. Box 6223
New Delhi 110 015
Tel: 011-41419514 / 5 / 6
e-mail: esp-del@LNTEBG.com

L&T Electrical & Automation
Grand Chandra, 2nd Floor
Fraser Road
Opposite Doordarshan Kendra
Patna 800001
e-mail: esp-patna@LNTEBG.com

L&T Electrical & Automation
L&T House
P. O. Box 119
191/1, Dhole Patil Road
Pune 411 001
Tel: 020-48544395 / 48544279
e-mail: esp.pnq@LNTEBG.com

L&T Electrical & Automation
Crystal Tower,
4th Floor, G. E. Road
Telibandha
Raipur 492 006
Tel: 0771-4283214
e-mail: esp-raipur@LNTEBG.com

L&T Electrical & Automation
3rd Floor
Vishwakarma Chambers
Majura Gate, Ring Road
Surat 395 002
Tel: 0261-2473726
e-mail: esp-sur@LNTEBG.com

L&T Electrical & Automation
Radhadaya Complex
Old Padra Road
Near Charotar Society
Vadodra 390 007
Tel: 0265-6613610 / 1 / 2
e-mail: esp-bar@LNTEBG.com

L&T Electrical & Automation
Door No. 49-38-14/3/2, 1st floor,
NGGO's Colony, Akkayapalem,
Visakhapatnam 530 016
Tel: 0891-2791126 / 2711125
e-mail: esp-viz@LNTEBG.com

Product improvement is a continuous process. For the latest information and special application, please contact any of our offices listed here. Product photographs shown for representative purpose only.



L&T Electrical & Automation, Electrical Standard Products

L&T Business Park, TC-2, Tower B, 3rd Floor, Gate No. 5, Saki Vihar Road, Powai,
Mumbai - 400 072, INDIA www.lntebg.com

Customer Interaction Center (CIC)

BSNL / MTNL (toll-free): 1800 233 5858 Reliance (toll-free): 1800 200 5858
Tel: 022 6774 5858 Email: cic@lntebg.com Web: www.lntebg.com